

Student Website Documentation for Mac

This document covers the steps required for you to be able to update your personal websites. Individual student websites are hosted at the following address:

<http://students.pepperdine.edu/<YOUR NETID>/>

Your NET ID is the username you use to login to your computer and is also the username used for email and PepperdineXpress.

The connection to the web-server is established via SFTP (Secure File Transfer Protocol) using an SFTP client. Fetch is the officially supported SFTP client. Once connected, you can upload, download, or delete HTML files to/from your directory.

NOTE: We recommend having a file called default.htm in your directory as this is the file displayed when a user enters an address. In this case no HTML file is specified, but rather just a directory name. If default.htm does not exist in a student member's directory and a user browses to URL such as the above, the user will receive an error message.

Mac OS X systems have built-in FTP functionality, but a 3rd party application is required for SFTP access. Fetch is the officially supported application for this purpose on systems running Mac OS X.

Configuring Fetch

Fetch client software offers you Secure FTP (SFTP) connections to the Pepperdine Student server. Fetch is available as a free download from the projects website:

<http://fetchsoftworks.com/edstore>

Fetch is commercial product available for purchase but free to educational and charitable institutions. The above page will require a login to download the full version of the software. The login for Pepperdine is:

Login Name: **steam**
Password: **engine**

As of this writing the latest release of Fetch is 5.0.5. After downloading the Installation package, launch the installer and follow the prompts to correctly install the product. Leave the default options when prompted.

Once the file is copied and installed, launch Fetch. Now you can run the program and configure it for access to your site files. Use the following steps to configure Fetch:

1. Open the Fetch application.
2. A window will pop up prompting for the following info:
 - a. Hostname: **students.pepperdine.edu**
 - b. Username: *Your Pepperdine Username*
 - c. Connect using: SFTP



Figure 13: Configuring Fetch with your information

3. Click on the blue arrow at the bottom of the New Connection dialog (See Figure 13) and enter “**/MyWeb**” as the “Initial Folder”. You can safely ignore the Ports and “Try To Connect” fields.
4. Click the “Connect” button.

If you are correctly connected to the network, you will see a new window which will contain your site files. You should now be able to View, Edit and drag new files into your web directory. You should, however, select files and then run operations using the toolbar buttons, at least until you become familiar with the application.

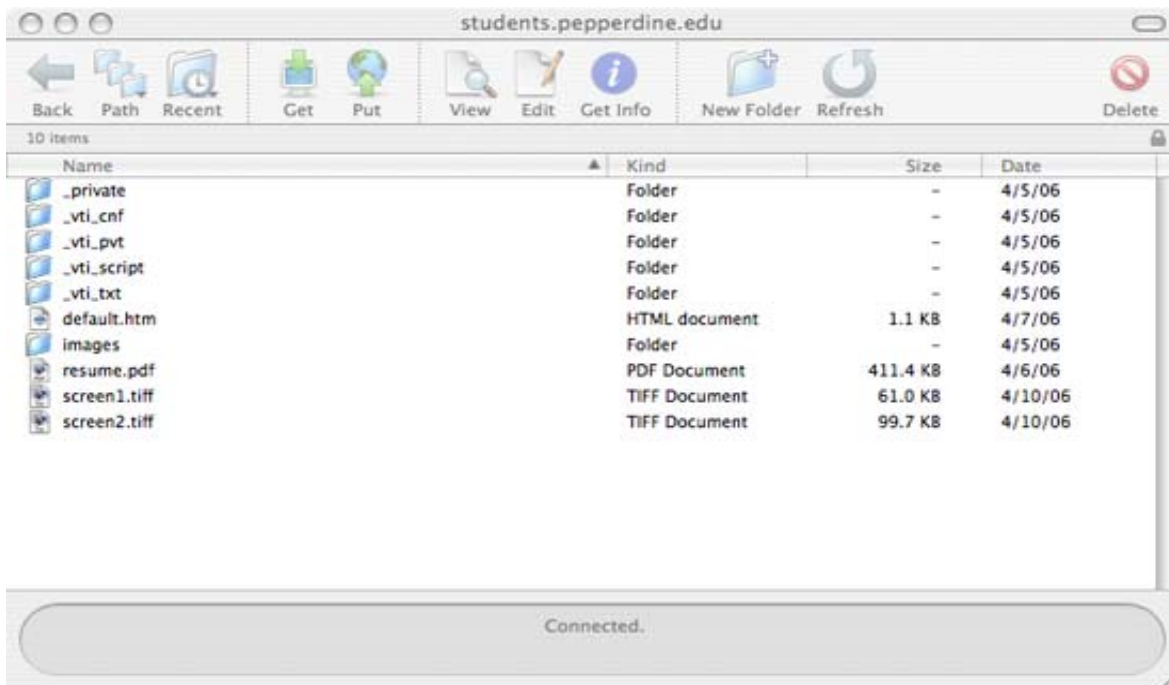


Figure 14: Looking at your files using Fetch.

If you have any questions or problems feel free to contact GSEP Technical Services at gseptech@pepperdine.edu.