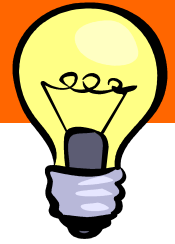


M.A. PSYCHOLOGY PROFESSIONAL DEVELOPMENT
CLINICAL CONNECTIONS



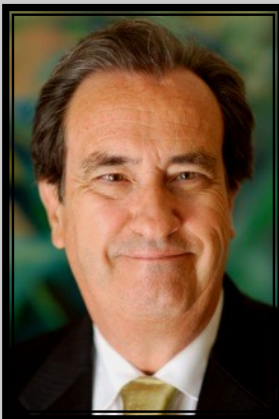
***Illuminating Relevant Clinical Issues
& Networking with Colleagues***

SPIRITUALITY IN PSYCHOTHERAPY

We are honored to welcome Dr. Edward Shafranske back to Clinical Connections in March! Dr. Shafranske presented at the very first Clinical Connections in 2004 and has been a great supporter of the M.A. Clinical Training and Professional Development Department for many years.

Spirituality plays a vital role in the lives of many clients; however, many clinicians question the best way to ethically bring this dimension into the therapeutic process. This presentation provides an overview of approaches to address religion/spirituality in treatment. The program begins with a review of the "state-of -the-art" clinical theory and research and features videotape excerpts of cases demonstrating integration techniques.

**Friday, March 2, 2012
7:00-9:00 PM, 3rd Floor, Room 324/326
Networking Begins at 8:30 PM
Pepperdine University - Irvine Graduate Campus**



Edward Shafranske, Ph.D., ABPP., is Professor of Psychology, Pepperdine University. A psychologist and psychoanalyst, he has been in the forefront of theory building, developing approaches to address religion and spirituality in psychotherapy. His publications include: *Religion and the Clinical Practice of Psychology and Spiritually Oriented Psychotherapy*; he currently serves as Associate Editor for APA's forthcoming *Handbook of Psychology, Religion, and Spirituality*. He served twice as President of APA Division 36: The Society for the Psychology of Religion and Spirituality and received the Distinguished Contribution to Psychology as a Profession Award by the California Psychological Association for his work in this area.

If you are unlicensed, you may be able to get hours towards licensure with your clinical supervisor's approval! This is a FREE event!

Please RSVP to Kathleen Wenger at psyprofdev@pepperdine.edu.

This event is sponsored by the M.A. Clinical Training & Professional Development office.