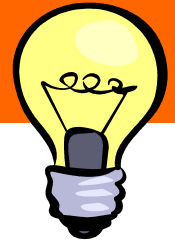


M.A. PSYCHOLOGY PROFESSIONAL DEVELOPMENT
CLINICAL CONNECTIONS



*Illuminating Relevant Clinical Issues
& Networking with Colleagues*

TECHNIQUES FOR USING SAND TRAY THERAPY WITH CLIENTS

Sand tray therapy can be an effective adjunct modality to therapeutic work with clients. It allows the client to express themselves non-verbally and symbolically. In this presentation, the history of sand tray therapy will be reviewed and practical ways of using sand tray from multiple theoretical orientations will be explained. Participants will leave this presentation having the basic understanding and tools needed to begin using sand tray with clients.

Friday, April 6, 2012

7:00-9:00 PM, 3rd Floor, Room 324/326

Networking Begins at 8:30 PM

Pepperdine University - Irvine Graduate Campus

18111 Von Karman Avenue, Suite 332, Irvine, CA. 92612



Linda Buck, LMFT, is a Licensed Marriage & Family Therapist with a Master's degree in Clinical Psychology from Pepperdine University. She is also a Clinical Supervisor, Sandplay Practitioner, and Spiritual Director. Her primary therapeutic focus includes working with individuals with issues of complex trauma. Besides talk therapy, she integrates Sandplay and clinical hypnosis into her work with clients. Linda is adjunct faculty at Pepperdine University Graduate School of Psychology. She also presents on various topics, including the integration of spirituality and psychology. Linda is a Sister of St. Joseph of Orange.

If you are unlicensed, you may be able to get hours towards licensure with your clinical supervisor's approval! This is a FREE event!

Please RSVP to Kathleen Wenger at psyprofdev@pepperdine.edu.

This event is sponsored by the M.A. Clinical Training & Professional Development office.