



SUMMIT PREPARATORY
CHARTER SCHOOL

A 4-8 charter school for Los Angeles.

OUR MISSION

Through rigorous academics and the development of active citizenship, **Summit Preparatory Charter School** educates fourth through eighth grade students for success in the most selective high schools and colleges.

OUR APPROACH

We believe all students can learn. Every student, regardless of socio-economic status, race, home language, ability, or gender, can and will achieve excellence when held to high academic and behavioral standards and given the supports to reach them.

We believe that reading, writing, and math are key. Students receive two daily periods of literacy and two daily periods of math.

We believe that teacher quality matters. Highly effective teachers in the classroom facilitate and nurture the academic and personal growth of students. Summit Prep prioritizes teacher recruitment, training, development, and leadership.

We believe that instructional decisions should be based on data. Teaching isn't guesswork – teachers constantly review students' work to ensure that they are teaching the right skills in the right order at the right time.

We believe in more time on task. Students at Summit Prep attend an extended school day for 185 days each year. For students who need more support, we add an hour of Tutoring Plus four days a week, which allows for more time to remediate essential skills and extend learning opportunities.

We believe that parents are our partners. Parents will receive daily communication regarding student behavior and academic performance. Parents can sit on an advisory committee to give input to the Board, and Summit Prep hosts monthly *cafecitos* as another forum for parents to interact with school leaders.

For additional information, please contact:

Arianna Haut, Lead Founder

(323) 642-8806

ahaut@buildingexcellentschools.org



Be part of something great:
Join our founding team.

Our team is made up of a highly collaborative group of teachers and staff who share a passion for closing the achievement gap. We have high expectations for academics and discipline, and simultaneously value joy in the classroom, making learning fun for our students and teachers.

Summit Prep's teachers provide the most critical work of our school - the daily instruction, evaluation, and support of our students. A teacher's primary duties include:

- Participating in a collaborative curriculum development process
- Planning and implementing curricula and activities to meet academic standards
- Designing and implementing assessments that measure progress towards academic standards
- Using assessment data to refine curricula and inform instructional practices
- Reinforcing school-wide rules and expectations in classrooms and elsewhere on campus
- Being accountable for students' mastery of academic standards
- Communicating frequently with parents, including frequent progress reports
- Participating actively in grade-level meetings, faculty meetings, and other meetings
- Participating in staff development, including three weeks of summer orientation and training
- Leading a tutoring session three days a week
- Meeting with co-teachers on a regular basis to help each other improve as teachers

Qualifications include:

- Philosophical alignment with the college preparatory mission of the school
- A "whatever it takes" attitude
- Valid CA Multi Subject Teaching Credential or Intern Credential through a program recognized by the CA Commission on Teacher Credentialing, including authorization for instructing English Language Learners
- Highly Qualified under terms of NCLB
- Commitment to continuous professional development
- High behavioral expectations and strong classroom management skills
- The desire to work as part of a team, with parents, and with community members
- Experience teaching in an urban setting with proven academic results (highly preferred)

To apply to join our team, please contact:

Arianna Haut, Lead Founder
(323) 642-8806
ahaut@buildingexcellentschools.org

Working at Western Youth Services



www.westernyouthservices.org

As a Clinician, what will I be doing?

JOB SUMMARY: A WYS Clinician is responsible for delivery of clinical assessment, diagnosis, treatment planning, case management, consultation, crisis intervention and collateral treatment to WYS clients. A Clinician is also responsible for meeting all regulatory and Agency requirements regarding the documentation of clinical services delivered, and individually contributing to the Agency Strategic Plan Objectives of:

- Defining and providing a portfolio of compelling services and programs with proven effectiveness
- Increasing awareness of community needs and the services we provide (promote brand recognition)
- Securing diversified funding and partnerships

By successfully meeting and/or exceeding the specific position duties and responsibilities below.

ESSENTIAL DUTIES and RESPONSIBILITIES include the following:

Job Proficiency:

- Provides comprehensive clinical assessment of assigned clients with focus on client and family's strengths and goals for treatment.
- Develops with the client/caregivers an "understandable" service plan with measurable, achievable, short-term timelines.
- Provides direct clinical care to clients.
- Establishes and maintains therapeutic rapport with client and productive working relationships with collateral workers and/or involved family members.
- Provides crisis intervention services as needed.
- Ensures and coordinates the provision of psychiatric evaluation and medication monitoring service as indicated.
- Coordinates the overall care within the mental health system. Actively engages the clients in community-based resources during and after treatment.
- Provides discharge planning and coordinates and secures aftercare resources.
- Participates in supervision per regulatory and Agency requirements.
- Performs other duties as assigned.

Quality and Accuracy:

- Demonstrates knowledge, understanding and compliance with the highest ethical standards promoted by WYS.
- Provides evidenced-based quality clinical care, provides community based services and builds developmental assets
- Adheres to Agency procedures for handling clinical emergencies.

Teamwork and Partnership:

- Supports team growth.
- Customer oriented.
- Leads by example and demonstrates a commitment to Agency values.
- Works in concert with other team members to support the value, strategies and mission of WYS.

QUALIFICATION REQUIREMENTS

Education

Possession of a Master's degree in Social Work, Marriage, Family and Child Counseling, Clinical Psychology, Counseling, Counseling Psychology, or other related field; and registration as an Associate Social Worker or MFT Intern with the Board of Behavioral Sciences (BBS). Two years of directly related experience working with adolescents, children and their families. Some knowledge of community resources, case management processes, community outreach and program planning. Ability to write clear and concise reports, with conformance to prescribed style and format. Ability to effectively present information orally and in writing in one-on-one, small group and large group settings, including the ability to effectively respond to questions from small and large groups of employees or clients.

Why do I want to work for Western Youth Services?

5. The Generous **Benefits** package and Competitive **Salary**
4. The **People** you'll work with
3. The **Experience** you'll gain
2. The **Training and Clinical Supervision** you'll receive
1. The **DIFFERENCE YOU'LL MAKE**

To see current openings visit our website at www.wysoc.org

To apply for an opening please email your resume to Human Resources at hr@wysoc.org or fax to 949-951-2871, NO PHONE CALLS PLEASE

all
intern - unpaid



Contact Information: Sheila Diskin (Clinical Director)
2101 East Fourth Street, Suite 150-B
Santa Ana, CA 92705
Phone: 714-547-8111 Fax: 714-547-7905
Website: www.turningpointsantaana.org
E-mail: tpcff@sbcglobal.net

Site Description: Turning Point Center for Families is a non-profit counseling center located in Santa Ana that provides low cost marriage, family, child and individual counseling services. They also provide counseling services to students at various elementary, middle, and high schools in several school districts. In addition, groups addressing teen anger management, teen substance abuse, parenting (in English and Spanish), and adult anger management (English and Spanish) are offered to clients. Turning Point Center for Families is a supportive and welcoming environment that supports graduate students and interns in acquiring a broad variety of training experiences.

Interviews: April-May

Length of Practicum: 12 months

Approximate Start Date: September 2014

Expected hours per week: 15 hours minimum (Caseload will start at 5 cases and build to 10)

Clientele: Adults, children (all ages) and teens. Agency also receives referrals of adolescents/adults from probation offices, school districts and school sites.

Supervision: Group and/or individual supervision held throughout the week. Weekly mandatory training meetings held on Tuesdays 1:00 – 3:00 PM.

Special Requirements: One-year commitment required. Spanish-bilingual trainees preferred

Application procedure: Mail or fax resume/CV to Sheila Diskin at tpcff@sbcglobal.net

TRAINEE

**St Jude Neighborhood Health Center
is recruiting an MFT Trainee**

**Deadline to apply : August 1, 2014 for
2014-2015 school year**

- Do you speak English and Spanish fluently?
 - Do you have some life experience?
 - Are you willing to commit 10 hours weekly?
 - Do you have medical knowledge or are willing to learn it?
 - Are you willing to work in a faith based environment?
- If you said “YES” then St Jude Neighborhood Health Center may be the place for you. We offer training in medical psychotherapy positions. Teaching you about mind/body connections, how to use electronic medical records, telemedicine, as well as various counseling methods that impact our patients.



**St. Jude Neighborhood Health Center
Contact Xenia Marshall, LMFT
Send resume and cover letter to
xenia.marshall@stjoe.org**



Western Youth Services
Where Youth Succeed

2013 Impact Report



11,385
Youth and Families
Directly Served
this Year!

2013 brought a continued focus on what we do best – enriching the mental health and wellness of youth and their families.

The data tells a great story about the work we've done in 2013 as well as the human story behind what we do and why we do it.

21% of children have a diagnosable mental or addictive disorder.

Half of all lifetime cases of mental disorders begin by age 14.

Our innovative 3 tiered approach allows us to help people with a wide range of needs, from prevention to crisis.

Intensive Services
Prevention and Educational Services

Individual Services

21 Schools
use our
School Based
Program

"[WYS] counselors help you to not be a bully or join a gang and be a good person."
-Elementary School Student

"Thank you [WYS] for making our family happier and closer."
-WYS Client

Connected
3,971 At Risk
Youth to
Resources

\$100 will provide emotional support and resources to a family for 4 months

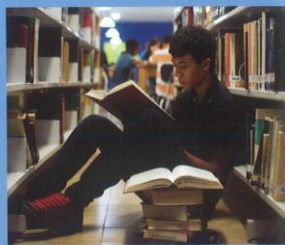
Support Western Youth Services in our continued work for mental health and wellness!

www.westernyouthservices.org

REACH YOUR POTENTIAL BY HELPING KIDS REACH THEIRS

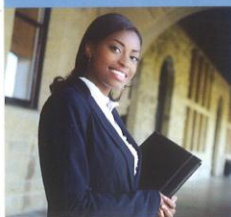
Outreach

Concern offers approximately 200 internship positions per year. They are available to senior level Bachelor's, Master's and Doctoral students seeking real-world experience. Majors include Psychology, Counseling, Pupil Personnel Services (PPS), Marriage and Family Therapy (MFT), Child/Adolescent Development, MSW, Sociology and Human Services. An internship with Outreach Concern requires a minimum of two days a week (approximately 15 hours) for the academic school year.



GAIN VALUABLE PROFESSIONAL EXPERIENCE

As an Outreach Concern intern-counselor, you will handle diverse caseloads interacting with students, teachers and parents in a school setting. You may be assigned to work with students in an elementary, middle or high school where you will encounter a wide range of emotional, social or behavioral issues. Your goal is to help students overcome these issues so they can focus on learning and achieving their



personal success both in and outside the classroom. Prior interns report that real-world fieldwork is the most valuable way to prepare for a professional career.

CAREER-BUILDING INTERNSHIPS THAT MEET YOUR ACADEMIC AND PROFESSIONAL GOALS

outreachconcern

*Eliminating Barriers
to Learning*

2030 East Fourth Street, Suite 237
Santa Ana, CA 92705
714-547-1163
www.outreachconcern.org
information@outreachconcern.org



outreachconcern

*Eliminating Barriers
to Learning*

WHO WE ARE

Outreach Concern is a non-profit 501(c)(3) counseling agency dedicated to serving the needs of at-risk, school-age children and families. We have been providing counseling and support services to public, private and parochial schools in Los Angeles and Orange Counties for more than 16 years. We have a proven track record of making a significant difference in the lives of students. We are known for exceptional training, management and supervision of our counselors.

THE PROGRAM WITH MORE FIELDWORK THAN PAPERWORK

Outreach Concern is hands-on, face-to-face counseling of students in grades K through 12 who are experiencing social, emotional, academic and behavioral problems that impact their ability to learn and succeed in the classroom. Whatever the cause, they manifest as classroom disruptions, poor attention, low grades and even self-destructive behavior. These reactions are triggered by a wide range of problems including child abuse, school violence, substance abuse, being threatened or injured, teenage pregnancy, parent/child conflict, divorce, running away and attempted suicide. As an Outreach Concern on-campus counselor,



you work directly with these students on a confidential basis assisting them in overcoming their personal barriers to success both in and outside the classroom.

RECEIVE CONTINUAL COMPREHENSIVE TRAINING

An Outreach Concern internship begins with intensive training that continues throughout the school year:

- Initial 3-day, 30-hour training program includes interviewing and counseling procedures; child abuse and suicide prevention training; child development, parenting and adolescent issues and intervention techniques.
- A 4th and 5th day of advanced training mid-year.



- Experience in cognitive/behavioral/crisis interventions, family system dynamics, educational issues, case management, laws and ethics and clinical presentations.
- Intensive clinical supervision, paid malpractice insurance and extensive training from a variety of specialists.
- Regular meetings with your Regional Field Supervisor plus on-going direction and support from our Clinical Director; a professional with more than 30 years of private practice and supervisory experience.
- Weekly meetings with a Clinical Supervisor; who reviews all cases and provides supervision and direction.
- Ongoing continuing education seminars cover a variety of clinical issues germane to working with children, adolescents and families.

WHAT OUR INTERNS SAY

"Outreach Concern has provided me with excellent support and guidance and invaluable experience working in a clinical setting with children and families. The combination of these experiences and the opportunity to work with a knowledgeable staff has provided me with a vital background for my future. I highly recommend Outreach Concern."

Veronique McCarthy
California State University, Long Beach

"This is a great experience if you are considering the counseling field as a career choice. You learn everything regarding the role of the counselor, as well as how to work with children, adolescents and parents effectively."

Melo Enriquez
California State University, Los Angeles

"Outreach Concern has provided me the opportunity to work with children and their families. The structure and role modeling provided by this organization has created a firm foundation for the work I am passionate about."

Etta Ferrari
Phillips Graduate Institute, Encino

APPLY NOW

Acceptance to the Outreach Concern Intern Program requires an in-depth interview, extensive reference check and fingerprinting to ensure we are selecting the most appropriate candidates to work



"This internship was an amazing opportunity that I recommend to all students. I gained an incredible amount of experience and knowledge that will continue to be useful for my future."

Meghann Ingram
California State University, Fullerton

"The best part of Outreach is the constant and reliable supervision. Both the regional and clinical supervisors have guided me through the learning process and helped me tremendously."

Vanessa McClanahan
California State University, Long Beach

"Outreach Concern is an extraordinary agency to work for. The training, supervision and workshops are excellent. There is an abundance of school placements to choose from and the faculty and students at the schools are wonderful to work with."

Amy Corrigan
California State University, Dominguez Hills

in our school-based counseling program. For more information, please call **714-547-1163** or email us at information@outreachconcern.org. To apply online, log onto our website: www.outreachconcern.org.



ES USTED VÍCTIMA DE CRIMEN?

- **Violencia Domestica**
- **Abuso/negligencia de niños o ancianos**
- **Abuso Sexual-Físico-Secuestros**
- **Robo-asalto-violación sexual**
- **Tráfico humano (explotación de personas)**
- **Víctima de accidentes por conducir bajo la influencia de alcohol**
- **Víctimas cuando el conductor huyó de la escena**
- **Homicidio vehicular**

**SI USTED CALIFICA, EL PROGRAMA PUEDE
CUBRIR LOS GASTOS DE SU
TRATAMIENTO PSICOLOGICO Y/O
PSIQUIATRICO**

ORANGE COUNTY & ADMINISTRATIVE OFFICE
1650 E. 4th Street., Suite 101 • Santa Ana, CA 92701
Phone (714) 667-5220 • Fax (714) 862-1070
www.casadelafamilia.org

LOS ANGELES OFFICES
3550 Wilshire Blvd., Suite 670 • Los Angeles, CA 90010
Phone (213) 384-7848 • (213) 384-8494 • Fax (213) 384-7449
info@casadelafamilia.org

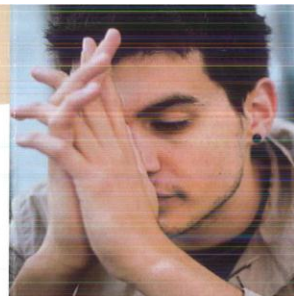
ASISTENCIA A VÍCTIMAS

Un crimen puede dejar consecuencias severas en la víctima. Semanas, meses o hasta años después, la víctima puede todavía vivir problemas emocionales, que le pueden llevar a sentir culpa, ansiedad, frustración o depresión.

CASA DE LA FAMILIA, asiste a aquellas víctimas y sus familiares que han sufrido un trauma emocional por un crimen.

CASA DE LA FAMILIA ofrece terapia individual y familiar, intervención de crisis, tratamiento psiquiátrico y evaluaciones diagnósticas, por medio de los fondos del Programa de Víctimas.

Tenemos oficinas en los condados de Los Angeles y Orange y servicios a domicilio en casos de necesidad.



El Programa de Compensación Para Víctimas determina si la persona califica para beneficios.

Estos son los posibles beneficiarios:

- La víctima de un crimen y su familia que han sufrido un daño emocional, o los sobrevivientes de víctimas de homicidio.
- Las personas que han presenciado el crimen y tienen una relación cercana con la víctima.

CASA DE LA FAMILIA ofrece tratamiento psicológico y psiquiátrico a las víctimas y familias para ayudarlos a superar el trauma.

Directora Clínica
Dr. Ana L. Nogales
Psicologa
PSY11317





ARE YOU A VICTIM OF CRIME?

- Domestic Violence
- Sexual-Physical Abuse
- Child-Elder Abuse/Neglect
- Rape-Stalking-Kidnapping
- Human Trafficking
- Assault-Robbery
- Victims of Drunk Driving
- Victims of Hit and Run
- Victims of Vehicular Manslaughter

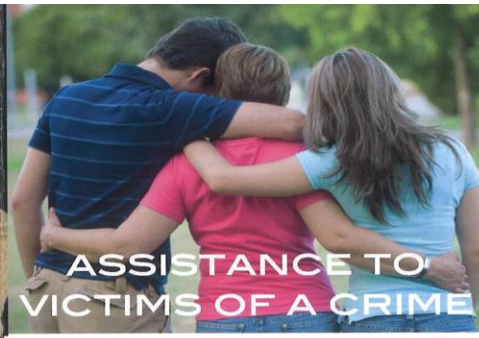


ORANGE COUNTY & ADMINISTRATIVE OFFICE

1650 E. 4th Street, Suite 101 • Santa Ana, CA 92701
Phone (714) 667-5220 • Fax (714) 862-1070
www.casadelafamilia.org

LOS ANGELES OFFICES

3550 Wilshire Blvd., Suite 670 • Los Angeles, CA 90010
Phone (213) 384-7848 • (213) 384-8494 • Fax (213) 384-7449
info@casadelafamilia.org



ASSISTANCE TO VICTIMS OF A CRIME

A crime can have a severe effect on the victim. For weeks, months or sometimes even years after the crime has been committed, the victim may continue to experience emotional problems, which can lead to feelings of guilt, depression, anxiety, frustration or anger.

CASA DE LA FAMILIA is dedicated to helping both the victims and families of those who have sustained emotional injury as a result of a crime.

CASA DE LA FAMILIA offers individual and family psychotherapy, crisis intervention, psychological testing and evaluations.

Services are available in both the Orange and Los Angeles Counties. Home visits may be provided.

Los Angeles: (213) 384-7848 • (213) 384-8494
Orange County: (714) 667-5220

WHO IS ELIGIBLE?

The Victims of Crime Program determines each individual's eligibility for benefits on a case-by-case basis.

Individuals that the Victim Compensation Program may consider eligible include the following:

- Victims of a crime suffering from emotional injury, or surviving family members of homicide victims.
- Someone present during the crime who has a close relationship with the victim.

Casa de la Familia offers psychological counseling and/or psychiatric treatment to victims and their families to help them cope with the trauma of being either a victim or a witness of a crime.

For additional information or to schedule an appointment, please call:

Clinical Director
Dr. Ana L. Nogales
Psychologist
PSY11317



Los Angeles: (213) 384-7848 • (213) 384-8494
Orange County: (714) 667-5220

CONSEJERÍA INDIVIDUAL/FAMILIAR/EN GRUPO

Permite que los jóvenes exploren sus emociones, aumenten su auto-conocimiento, y comprensión hacia otros, e inicien un cambio positivo en sus vidas.

CLASE EDUCATIVA PARA DELINCUENTES JUVENILES (JOE EN INGLÉS)

Educa a las familias en cuanto las leyes y regulaciones relacionadas a los menores. La clase está diseñada en colaboración con el Departamento de Policía de Garden Grove (GGPD) hacia delinquentes juveniles con primer delito para disuadir la conducta ilegal.

CLASES EDUCATIVAS DE DROGAS Y ALCOHOL

Educa a los jóvenes sobre las consecuencias del uso de drogas y los apodera a ser responsables de su bienestar y salud. Se requiere que los padres asistan a la primera sesión solos para aprender cómo comunicar los peligros y tendencias del uso de droga a sus hijos.

INTERVENCIÓN DE TABACO Y CESACIÓN EN GRUPO

Educa a los jóvenes sobre los riesgos y efectos del uso de tabaco y provee los recursos, conocimiento, y motivación para ayudarles a dejar de usar el tabaco.

GRUPO PARA EL MANEJO DE IRA

Guiamos a los jóvenes para que identifiquen y entiendan sus emociones y sean proactivos y no de reactivos en tiempos de estrés y enojo.

EDUCACIÓN SOBRE LA CRIANZA DE LOS HIJOS

Se les ofrece esta clase para padres que se enfoca en la resolución de conflicto familiar y como aumentar la comunicación efectiva, establecer los límites apropiados, y la responsabilidad familiar. Además, FYOP provee sesiones en grupo de corto plazo y continuos para los padres interesados en trabajar en asuntos familiares e individuales en ambiente de grupo.

PROGRAMA DE RESTITUCIÓN

Se les requiere a los individuos quienes cometan un crimen hacia otros que incluya la pérdida de dinero, que reembolsen a las víctimas del crimen. El programa de FYOP facilita en el intercambio de dinero del cliente a la víctima a través de colección y desembolso.

PROGRAMA DE SERVICIO COMUNITARIO

Si hay caso de absentismo escolar u otras consecuencias de conducta, se requiere que los jóvenes en colaboración con una agencia sin fines lucrativos para dedicar horas de trabajo gratuitas para desarrollar sus habilidades de contabilidad y responsabilidad.

PROGRAMA DE ELIMINACIÓN DE GRAFITI

Individuos quienes han participado en cualquier tipo de vandalismo se comprometen a una sesión de 6-horas de servicio comunitario en sábado embelleciendo una área de Garden Grove; pintando, recogiendo basura, barriendo, etc., mientras desarrollando orgullo en su comunidad.

INFORMACIÓN SOBRE

EL PROGRAMA FAMILY & YOUTH OUTREACH PROGRAM

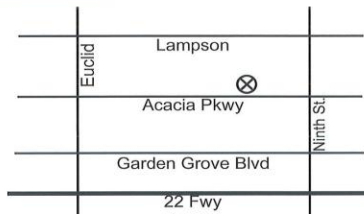
El programa FYOP-Family & Youth Outreach Program provee consejería, clases educativas, y otros programas comunitarios para familias con jóvenes de 18 años o menores.

El programa FYOP trabaja con el Departamento de Policía de Garden Grove (GGPD) y el distrito escolar de Garden Grove (GGUSD) para servir a los jóvenes en riesgo quienes tienen problemas de conducta en la escuela o en casa.

BOYS & GIRLS CLUBS OF GARDEN GROVE Family & Youth Outreach Program



Juvenile Justice Center
11301 Acacia Parkway
Garden Grove, CA 92840
PHONE: (714) 741-5895
FAX: (714) 636-0351



BOYS & GIRLS CLUBS OF GARDEN GROVE Truancy Reduction Center (TRC)



Hare High School
12012 S. Magnolia Room B
Garden Grove, CA 92840
PHONE: (714) 537-7544
FAX: (714) 663-0351
E-MAIL: trc@bgcgg.org



BOYS & GIRLS CLUBS
OF GARDEN GROVE



FAMILY & YOUTH OUTREACH PROGRAM

UN GUÍA PARA LAS FAMILIAS.



GREAT FUTURES START HERE.



¿QUÉ PASARÁ LUEGO?

El departamento de policía GGPD tiene la opción de acción judicial formal o informal, significando que el caso puede ser mandado a corte o un programa de desviación informal, como FYOP.

¿QUÉ DEBO HACER MIENTRAS ESPERO LA DECISIÓN DE GGPD?

La acción formal o informal tendrá un costo financiero. Se recomienda que guarde dinero si es posible. En cuanto GGPD refiera su caso, la agencia (FYOP o Departamento de Libertad Condicional) se pondrá en contacto con usted.

¿CUÁNTO TIEMPO TENDRÉ QUE ESPERAR?

El tiempo de espera podrá ser entre 1-3 meses pero puede ser mas largo si hay necesidad de más investigación o hay sospechosos añadidos al caso.

EL ARRESTO DE MI HIJO FUE POR RAZONES DE GRAFITI, PERO COMO PADRE ME CITARON A MI. ¿POR QUÉ?

La ciudad de Garden Grove tiene ordenes administrativas por ciertos crímenes de grafiti. Como padre, usted fue citado como la persona responsable. Ese cargo es adicional a la acción judicial formal o informal, de su hijo/a.

TENGO INGRESOS LIMITADOS. ¿Y SI NO PUEDO PAGAR?

Como padre usted es responsable por su hijo. Lo puede poner a trabajar cortando grama, lavando carros, limpiando ventanas, etc., pero usted sigue siendo responsable. Falta de pago resultará en un tipo de servicio de colección.

¿SI MANDAN AL CASO A CORTE, DEBO CONSEGUIR ABOGADO?

Siempre tiene la opción de buscar ayuda legal, pero es probable que usted tenga que pagar. Es probable que necesite un abogado. El Departamento de Libertad Condicional, podría encargarse del asunto, sin proceso judicial. Si el caso va a corte, tendría la opción de pedir un defensor público.

¿QUÉ PASA SI MI HIJO TIENE ÉXITO CON EL DEPARTAMENTO DE POLICÍA?

Después que el GGPD recibe un reporte con "éxito" el caso es cerrado sin más procedimientos. Un archivo de arresto existirá, pero no de convicción, procedimientos en la corte, ni de la libertad condicional.

¿QUÉ PASO SI MI HIJO NO TIENE ÉXITO?

Después que el GGPD reciba un reporte "sin-éxito", ellos tienen la opción de continuar con procedimientos legales en la Corte Juvenil. Esto podría involucrar al Departamento de Libertad Condicional, la oficina del Fiscal del Distrito, multas, y un juez.

¿QUÉ PASARÁ LUEGO?

Su hijo asistirá a la escuela según la dirección administrativa, pero podría ser suspendido, dado escuela de sábado, u otra disciplina. Ser referido a FYOP es otra manera que su hijo puede tener éxito. El departamento de FYOP se pondrá en contacto con usted después de recibir la referencia, y hará una cita de entrada. En la cita de entrada, se les explicarán las formas de FYOP, tarifas, y programas. Su hijo asistirá a un programa(s) según la referencia de GGUSD. Si tiene éxito o no, un reporte será enviado al distrito escolar.

¿QUÉ TARIFAS* DEBO ESPERAR EN PAGAR?

Depende del programa(s) que refieren a su hijo. Una cita de entrada se requiere para matricular a su hijo y cuesta \$30.00 y cada clase cuesta \$90.00. El Servicio Comunitario requiere \$10.00 más. Por ejemplo, 1 clase+servicio comunitario+cita de entrada=\$130.00 en total, que es mucho menos que las tarifas judiciales. * Las tarifas pueden cambiar sin aviso.

¿QUÉ PASA SI MI HIJO TIENE ÉXITO EN FYOP?

Después que el distrito escolar recibe el reporte de estatus, el asunto sera designado "resuelto", ya que el alumno cumplió.

¿QUÉ PASO SI MI HIJO NO TIENE ÉXITO?

Después que el distrito escolar recibe el reporte de estatus, cualquier disciplina a causa de la falta de conformidad, será la decisión de la escuela y/o el distrito.

NO ESTOY DE ACUERDO QUE MI HIJO DEBE COMPLETAR PROGRAMAS EN FYOP. ¿CON QUIÉN DEBO PONERME EN CONTACTO?

FYOP no determina la validez del caso. El departamento de FYOP simplemente provee el programa(s) que complementa la infracción según la referencia. Si no esta de acuerdo con la decisión, debe ponerse en contacto con la persona quien esta haciendo la referencia o directamente con el distrito escolar.

MI HIJO/A FUE ASIGNADO SERVICIO COMUNITARIO A TRAVES DEL CORTE. ¿USTEDES PROVEEN ESTE SERVICIO?

Si. El departamento de FYOP tiene una lista de sitios que generalmente aceptan servicio comunitario, pero debe hacer una cita de entrada para matricularse en este programa. Luego el departamento de FYOP le dará una lista de sitios a los cual puede contactar. FYOP no hará la investigación. FYOP le dará la forma para documentar sus horas. Cuando complete las horas requeridas, nosotros haremos la documentación y se les dará un reporte oficial. Puede usar esto como prueba de realización para presentarla en la corte.

¿QUÉ ES EL TRUANCY REDUCTION CENTER (TRC)?

El departamento de TRC es un programa de FYOP que interviene con estudiantes quienes tienen absentismo escolar o llegadas tardes en excesivo. Los servicios incluyen un periodo de 3 meses monitoreando y estableciendo contratos de asistencia, conserjería, y servicio comunitario.

¿CÓMO HAGO REFERENCIA?

Complete la forma de referencia de FYOP con toda la información del estudiante e información adicional. (Asegúrese en marcar la caja de "Absentismo Escolar").

¿CUÁL ES EL PROCESO DE REFERENCIA?

1. El departamento de TRC se pondrá en contacto con la familia y hará cita de entrada con el estudiante y los padres o guardianes legales.
2. El departamento de TRC hará una evaluación de las necesidades del estudiante y diseñará un plan de acción para apoyarle/a.
3. El departamento de TRC monitoreará la asistencia del estudiante y asignará servicio comunitario mientras proveerá seguimiento con el estudiante, los padres, y la escuela.
4. El estudiante podría ser referido a servicios adicionales si es necesario.

¿POR QUÉ DEBE PARTICIPAR UN ESTUDIANTE EN EL PROGRAMA DE TRC?

Es importante que las familias esten informadas que si los problemas de absentismo escolar continúan, el estudiante corre riesgo de persecución formal. El Distrito Escolar de Garden Grove puede seguir con procedimientos formales con el School Attendance Review Board (SARB) o la Mesa Directiva de Asistencia Escolar. Esto incluye varias reuniones de aviso, y cartas dirigiéndose al absentismo. Si no tiene éxito, podría terminar teniendo una reunión final con SARB para determinar el juicio en la Oficina Fiscal del Distrito.

BOYS & GIRLS CLUBS OF GARDEN GROVE

La misión de los Boys & Girls Clubs de Garden Grove es permitir que todo joven, especialmente el que nos necesitan más, alcance su potencial total como ciudadano productivo, bondadoso, y responsable.



THE BRIDGE TO RECOVER

FREE DRUG TESTING
FREE ASSESSMENT

The BRIDGE

BRIDGE TEEN RECOVERY, LLC

Mental Health
Program
Available



23151 Verdugo Drive, Suite 115
Laguna Hills, CA 92653

—CROSS OVER TODAY.



23151 Verdugo Drive, Suite 115
Laguna Hills, CA 92653
Phone (949) 716-4623 | Fax (949) 716-4633
bridgeTeenrecovery.com

located in the Moulton Park Place



What's the ideal environment for recovery? Here at THE BRIDGE, we believe that recovery should take place close to home, where adolescents can learn to make the right decisions in their natural surroundings. Located in the heart of Orange County, THE BRIDGE offers quality treatment services for adolescents struggling with chemical dependency. Together with experienced professionals, THE BRIDGE will be there step by step alongside your family and adolescents towards a healthier and successful lifestyle.

The TEAM

Adolescents at THE BRIDGE will be cared for by a team of professional and licensed staff. Our qualified staff have years of experience in the field of recovery, and are ready to help. Our treatment professionals include the following:

- Marriage, Family and Child Therapist
- Certified Chemical Abuse Counselors
- Registered Nurse Practitioner
- Psychiatrist/Psychologist

The PROGRAM

At THE BRIDGE, a practical and effective out-patient program is implemented to lead your adolescents to success. It's a well-rounded comprehensive program that will help adolescents get back on track physically, emotionally, and academically.

The THERAPEUTIC Side

Core Counseling*

- Individual therapy
- Gender therapy
- Family therapy and education
- Psychological Evaluation

Recreational Therapy

- Physical activities
- Art therapy
- Team building activities
- Cultural activities

*The 12-Step Program is applied here at THE BRIDGE.

The ACADEMIC Side

THE BRIDGE partners with our local community school district, and fully supports academic achievement to prepare our teens for the future.

MOVING on

Transition program is crucial to avoid relapse. THE BRIDGE will help our teens stay on track.

Major health insurances accepted and financing available.
To learn more about our free drug testing offer, contact us today:

Kathy LeBon, Program Director
kathy@bridgeTeenrecovery.com

Scott Kalland, Program Administrator
scott@bridgeTeenrecovery.com

(949) 716-4623



Aftercare Specialist

OneLegacy, the non-profit organ and tissue recovery organization serving the seven-county greater Los Angeles area, has an immediate career opportunity for a Full-Time Aftercare Specialist in our Los Angeles Office.

Position Description: The Aftercare Specialist is responsible for providing grief support to OneLegacy's donor families. Responsibilities include, staffing programs, which address the emotional needs of organ/tissue donor families, providing written materials for donor families, referrals (as needed) and phone support for donor families. In addition the aftercare specialist facilitates written communication and meetings between Donor Families and Recipients as deemed appropriate.

Qualifications: Bachelor's degree in social work, counseling or related field required. Master's degree preferred. Two years' experience providing grief support to the public with special consideration given to providing services to people in crisis situations, both personally and in group settings preferred. Hospital experience preferred. Fluency in Spanish preferred. A current California driver's license, auto insurance based on California minimal insurance coverage standards and reliable automotive transportation is required.

Only Qualified Candidates should apply.

For immediate consideration, please apply on-line at:

www.onelegacy.org/site/about/careers



Donor Family Aftercare Activities & Opportunities

OneLegacy's Aftercare Program aims to provide support to donor families and to continue to find meaningful ways to help donor families remember and keep their loved one's memory alive.

Here are some events, activities and opportunities which may be of interest:

Grief Support Groups and Workshops

We invite you and your family to participate in our FREE monthly grief support groups. Children 3.5 years+ and teenagers are welcome. The groups are held in our Los Angeles, Orange and Redlands offices. In October and November, we provide workshops which incorporate crafts and focus more on diversity in grief and surviving the holidays. These gatherings provide the opportunity to meet other donor families, talk about your grief, and receive support from your peers and trained grief specialists.

Bereavement Support

If you are interested in individual or family grief support or referrals in your area, please feel free to contact us and we will assist you with finding the appropriate resources.

Donate Life Rose Parade Float and Rose Dedication Program

Donor families help prepare materials and glue flowers and seeds onto our float to help bring it to life. On December 26th and 28th, we host decorating shifts for donor family members. You must be at least 15 years old to decorate. Sign-ups usually begin in October.

Another way to honor your loved one and have a connection to the float is to dedicate a rose in the Family Circle Garden. Each rose carries a personal message of love, hope or remembrance. Families are able to come to Pasadena on December 29th to personally place their dedicated rose on the float. For more information about the float and the rose dedication program, go to www.donatelifefloat.org or contact us.

Donate Life Run/Walk

This event allows donor families to gather and walk or run in honor of a loved one. Donor families who register through OneLegacy Family Care receive personalized t-shirts and buttons with their loved one's picture. Donors are honored in the Circle of Life Garden, where pictures of donors and inspirational words are submitted by donor family members. For event information, go to www.donateliferunwalk.org or contact us. This event is held at Cal State Fullerton at the end of April or the first weekend in May.

Stay Connected Through *The Companion*

If you have not done so already, provide us with your email address or mailing address so that you will continue to get our donor family newsletter which provides information on grief and coping, and keeps people informed about upcoming activities.

Donate Life Ambassadors

Our volunteer program offers a one-day training to provide information on organ and tissue donation and helps participants tell their own personal story to inspire others to consider donation. For more information, go to www.onelegacy.org/site/community/volunteer or contact our Volunteer Coordinator at 213-356-5213.

**Counseling Intern
Student Counseling Services
Office of Student Affairs**

Job Function:

The Student Counseling Services program is seeking two (2) Internship positions. The Student Counseling Internship positions are part-time, non-exempt and will be under the direct supervision of the Director of Student Counseling Services Program. Internship duration is from September 9, 2014 through June 26, 2015. Interns will be expected to work 16 hours a week at the rate of \$16.00 an hour. Doctoral Level and Post-Doctoral Level Intern Students are encouraged to apply.

Responsibilities:

- Provides one-on-one therapy sessions for currently enrolled Otis College of Art and Design undergraduate and graduate students who are experiencing a wide range of emotional, psychological, academic, personal, substance abuse, or academic difficulties; be skilled at crisis intervention and management.
- Documents and maintains client files; be available for "triage duty" so that clinical emergencies are responded to immediately; conduct preventive psycho-educational workshops; facilitate or co-facilitate support groups for students with special needs; provide premarital, marital or couple counseling.
- Performs other related duties as assigned by the Director. The Interns will be expected to model professional behavior with student clients at all times.
- Other duties as assigned.

Qualifications:

We are seeking Interns who have crisis intervention and crisis management skills, mature, aware of their own process, and possession and use of sound clinical judgment; entry level clinical and assessment skills; proficiency in one-on-one therapy skills; ability to work with difficult students and anxious parents; collaborate well with other professionals, professors and administrators who provide direct services for students.

The Interns will receive one to two hours of individual supervision per week and one hour of group supervision per week. Additional time for supervision and/or consultation will be available as needed. The regular working hours of the Student Counseling Services Office are Monday through Friday, from 8:30 A.M. to 5:00 P.M., with anticipated evening and weekend hours.

How to Apply:

Interested candidates must apply via Otis' website at <https://otis.simplehire.com> to be considered for the positions. In your resume, please include descriptions of experience, content, location, and hours of clinical training.

If you are interested and believe that you have the requisite qualifications and skills please submit an application kit which includes: the type of license of each supervisor you have worked with (i.e., licensed psychologist, board-certified psychiatrist, etc.), copy of official transcripts of all graduate work, three letters of recommendation, including at least two from licensed clinical supervisors. Applicants may OPT to give references by completing a "Waiver of Access Rights" form which should then be attached to the letter of recommendation. The deadline for submitting all application kit materials is June 17, 2014. Application kits should be forwarded to:

Fred L. Barnes, Ph. D., Director
Student Counseling Services
Otis College of Art and Design
9045 Lincoln Blvd.
Los Angeles, 90045





Adult Services

One in five people is affected by mental illness in the U.S. Many who suffer from serious mental illness find that it adversely affects their lives. By combining psychiatric treatment, education, rehabilitation and community support, Didi Hirsch helps people achieve a better quality of life and a functional recovery from their illness.

Our adult programs can help identify major mental illness such as bipolar disorder, depression, and schizophrenia, relieve symptoms (i.e.,

anxiety, depression, aggression), increase coping skills, improve work performance, develop conflict resolution and problem-solving skills, identify resources in your community.

Medi-Cal is accepted in all of our Adult programs; however, clients are provided services regardless of their ability to pay. Clients are also assisted in applying for benefits to which they may be entitled.

Intensive Mental Health Services

At our Headquarters and Inglewood Center, we provide comprehensive, specialized services for individuals with serious mental illnesses that have led to frequent hospitalizations or homelessness. Our intensive mental health services (also called Full Service Partnerships) provide the support necessary for a seriously mentally ill person to live successfully in the community. The program is designed to address the specific needs of transitional age youth (16-25), adults (26-60), and older adults (60+).

Staff members work with clients in community settings such as work, home, hospitals, board and care facilities, institutions, and court to help them achieve the highest possible level of functioning. Staff members have small caseloads to ensure individualized attention to meet clients' needs, and services are provided daily if needed.

Outpatient Mental Health Services

The Adult Outpatient Mental Health Program assists individuals with severe and persistent mental illnesses such as schizophrenia, bipolar disorder, and severe depression, in managing their symptoms and gaining skills to live independently in the community, preventing hospitalization, and achieving their rehabilitation goals.

Methods of treatment include: case management, medication evaluation and management, individual therapy, group therapy, crisis intervention, psychological testing, vocational rehabilitation, psycho-educational groups, and/or consultation with family and/or significant others.

Services are provided in English and Spanish, Monday through Friday, at our Headquarters (Culver City) and Inglewood Center.

Caregivers Support Groups

We offer support groups for the caregivers of older adults with Alzheimer's disease or some other forms of dementia, as well as for people caring for frail elderly family members.

Crisis Residential Care

Jump Street and Excelsior House are crisis residential treatment centers, providing a 28-day program for adults who are experiencing serious problems due to mental illnesses. Residents may have been homeless or at risk of homelessness. The program helps get them stabilized, and provides treatment for their mental illnesses. The program also helps clients find long-term housing and connects them to on-going treatment programs.

Drop-In Center

We offer a drop-in center at our headquarters for individuals suffering from severe or chronic mental illness. The drop-in center is open to anyone and provides daily group therapy, individual therapy, and peer advocate counseling, just to name a few.

Open five days a week, the drop-in center also features a psychosocial clubhouse, which provides support, social opportunities, and skill building activities for chronically mentally ill adults. Members can participate in group activities that help to reduce feelings of isolation, take a variety of computer classes, and contribute to a clubhouse newsletter. The group is self governing, with guidance and support from staff.

Employment Services

This program helps adults with chronic mental illnesses find a job. Clients learn computer skills, resume building, and interview strategies, such as how to dress appropriately for job interviews. After finding employment, clients continue to receive supportive services to help



Child and Family Services

We believe that a strong family produces a strong child, one who is better able to cope with growing up in an increasingly challenging world. Parents need support in rearing children in this complex society.

Our child and family services assist families in dealing effectively with problems in order to maximize functioning at home, in school, and in the community.

Medi-Cal, Healthy Families, and AB 3632 are accepted in all of child and family outpatient programs. However, children and families are provided services regardless of their ability to pay.

Families are also assisted in applying for benefits to which they may be entitled.

Our child and family programs can: decrease family stress; improve child behavior; improve communication between family members; increase coping skills; improve school performance; develop conflict resolution and problem-solving skills; learn about resources in your community; relieve symptoms (i.e., anxiety, depression, aggression); help with early identification of major mental illness such as bipolar disorder, depression, and schizophrenia.

Outpatient Mental Health Services

The Child and Family Outpatient Mental Health Program provides counseling in English and Spanish to children and families who are experiencing behavioral and/or emotional difficulties. We emphasize family involvement for effective and lasting change. Treatment teams recommend a variety of useful approaches based on a family's individual needs, which can include a family, group, and/or individual therapy; psychiatric evaluation and medication; psychological testing; school consultation; case management; and parenting classes.

Services are provided Monday through Friday, at our Headquarters (Culver City), Inglewood, Taper, Mar Vista, and Metro Centers and at local schools. Late afternoon and evening appointments are available to accommodate schools and work schedules.

ADHD Services

Our outpatient clinics provide specialized services to children diagnosed with attention deficit hyperactivity disorder (ADHD) and their families. Services include thorough assessment and diagnosis, psychiatric evaluation and medication monitoring, parenting skills groups, social skills groups for children, and individual and family therapy geared toward improving behavior and school functioning.

The Child Alert Program

The Child Alert Program offers counseling for children and families whose lives have been affected by neglect and/or child physical, sexual, or emotional abuse. Our goals are to resolve issues stemming from abuse or neglect, and to prevent further abuse.

Crisis Intervention

When families experience an acute crisis such as a death in the family, recent divorce, or loss of a job, family members often feel the need to talk to someone who can assist them in developing ways to cope. Our outpatient clinics provide short-term crisis intervention to help families learn to cope with the crisis in their lives and regain their equilibrium.

Probation Youth

Therapy is provided to youth on probation at our clinics as well as at local high schools. Services focus on assisting youth in setting goals for themselves, and addressing mental and substance abuse issues that may be keeping them from meeting their goals. We work closely with families to promote lasting changes.

School-Based and School-Linked Services

Because school performance and behavior are so important to children's success, our child therapists are based in local schools in Culver City, Inglewood, Los Angeles, and neighboring communities to provide school-based mental health services. We work closely with teachers, school psychologists, principals, and Healthy Start school collaboratives to ensure that children's mental health and academic needs are being met in the school setting.

Reunification of Abducted Children Program

The Reunification of Abducted Children Program is a joint program of Didi Hirsch Mental Health Services, of Find the Children, and of the Los Angeles County Inter-Agency Council on Child Abuse and Neglect - Abducted Children Task Force. Based at our Mar Vista Center, this program provides services to abducted children and the families with whom they are reuniting.



Didi Hirsch is seeking highly motivated and energetic individuals who have a proven track record of successfully providing clinical services. 70% of the positions are field based so ability to travel is required, as well as availability to work on call twice per month. Current CA license and a driving record acceptable to the Agency's insurance is required.

Therapist (Unlicensed)

- Possess a minimum of 2 years Adult Services experience within a DMH contracted environment highly desired but not required. **Preference will be given to those with FSP/FCCS experience.**
- Must be a registered Intern with the California Board of Behavioral Sciences (CA BBS)
- Advanced knowledge of therapeutic intervention, assessment & intake; crisis & individual/family therapy; documentation & multicultural & socio-economic issues.
- DMH paperwork and community mental health experience required.
- Demonstrated effectiveness in managing large and complex caseloads.
- Excellent written and oral communication, advocacy and PC skills.
- Must be flexible and willing to provide field-based services

Bilingual Therapist (Unlicensed)

- Possess a minimum of 2 years Adult Services experience within a DMH contracted environment highly desired but not required. **Preference will be given to those with FSP/FCCS experience**
- Must be a registered Intern with the California Board of Behavioral Sciences (CA BBS)
- Advanced knowledge of therapeutic intervention, assessment & intake; crisis & individual/family therapy; documentation & multicultural & socio-economic issues.
- Bilingual Spanish speaking required.
- DMH paperwork and community mental health experience required.
- Demonstrated effectiveness in managing large and complex caseloads.
- Excellent written and oral communication, advocacy and PC skills.
- Must be flexible and willing to provide field-based services.

Therapists II or Psychologist (Licensed)

- Possess a minimum of 4 years experience within a DMH contracted environment highly desired but not required.
- Preference will be given to those with FSP/FCCS experience.
- LCSW, LMFT, Psy.D, PhD, (CA Board Licensed).
- 2 Years post licensure highly preferred.
- Experience providing clinical supervision to Unlicensed Therapist.

Clinical Supervisors

- Licensure as LCSW, MFT, Psy.D. or Ph.D.
- Must be 2 years post licensure
- Must be able to work in a variety of settings including outpatient, field based settings.
- Experience providing clinical supervision to unlicensed therapists.
- Minimum 5 year experience working with individuals with a history of mental illness in a social service/mental health environment.
- Knowledge of conducting intensive therapy and case management.
- Knowledge of crisis intervention, documentation, psychiatric intern supervision, and multicultural and socio-economic issues.
- Know and comply with HIPAA, DMH, policies and documentation guidelines, and other related state/federal regulations.

Does this sound like the right opportunity for you?

Visit our website for these and other career opportunities <http://www.didihirsch.org/careers>



Didi Hirsch is seeking individuals to function as Assistant Counselors, assisting our professional counseling staff at our residential facilities in the West Los Angeles, and Inglewood Area. This position is ON CALL ONLY. Flexibility to work a non- set schedule is required, as position will provide fill in coverage for the regular staff.

On-Call Counselors

- Assist with case management; acts as substitute counselor; and facilitates client activity groups for adults residing and/or being treated in a mental health setting.
- Assesses and monitors client daily activity schedule; prepares and submits client participation report to Program Director and counseling staff.
- Provides/participates in crisis intervention and facilitates conflict resolution among the program participants as needed.
- Participates in providing 24-hour coverage that includes working evenings, weekends, and holidays.
- Maintains accurate and complete documentation of client self-administered medication; ensures compliance with Agency policies and procedures and County/other public agency regulations.
- Conducts phone referrals; performs intake screenings; prepares and files client charts for the adult residential program.
- Assists with scheduling client transportation to appointments with other community support services.
- Conducts routine walk-through of program facility; notes problems and prepares a physical plant and client safety status report.
- Develops and maintains counseling skills through seminars, workshops, or other forms of training related to substance abuse prevention.
- Attends and participates in program and Agency staff meetings.
- Other duties as assigned.

Does this sound like the right opportunity for you?

Visit our website for these and other career opportunities

<http://www.didihirsch.org/careers>



Homes for Life
FOUNDATION

8939 S. Sepulveda Boulevard, Suite 460
Los Angeles, CA 90045
(310) 337-7417

INTRODUCTION

Homes for Life Foundation (HFLF) was formed as a housing corporation in 1986, and as a 501(c)(3) tax exempt organization in 1987 by professionals from the fields of business and mental health, who were also relatives and friends of chronically mentally ill (CMI) adults. This dedicated group of volunteers helped to identify the lack of permanent, affordable, service-enriched housing as being the main obstacle to stability for CMI adults. HFLF recognizes that the majority of CMI persons do not require continued hospitalization, yet cannot manage to live entirely on their own.

STATEMENT OF MISSION

HFLF is dedicated to establishing a network of permanent, affordable, service-enriched housing within the geographic boundaries of Los Angeles County for individuals who suffer from chronic mental illness, those who are homeless or at imminent risk of becoming homeless.

The fundamental purpose of offering CMI adults the choice of a 'home for life' is to prevent their downward spiral of despair and crises resultant from eviction, and their eventual homelessness and many times death, due to the lack of such housing.

Homes for Life Foundation proposes a system-changing program, based on the concepts of prevention and collaboration among agencies. HFLF is committed to providing permanent housing which incorporates client centered rehabilitation and case management services, bringing together families, government agencies and mental health professionals, to serve such gravely disadvantaged CMI persons in a caring and cost-effective manner.

HFLF'S UNIQUE PROGRAM

Homelessness - and the lack of permanent housing for those with CMI is a major social problem which has been identified but not yet fully addressed by public or private agencies. HFLF is tackling the problem in Los Angeles County, where homeless CMI can be seen everywhere, to include downtown Skid Row, beach communities such as Santa Monica and Long Beach, suburban areas of San Fernando Valley, and the City of Pasadena. They are visible in the streets, parks, vacant lots and buildings of our cities.

HFLF has set a goal of breaking the "revolving door syndrome", which generates homelessness. HFLF is developing permanent, home-like housing where such persistently mentally disabled persons can choose to live for an unlimited amount of time, where their basic life needs are met, in caring, supportive living environments. In concert with such housing, HFLF delivers counseling, rehabilitation and case management services to clients, towards building their sense of success, belonging, and to help them reach their highest potentials, all critical to humane existence with positive meaning.



CURRENT JOB OPENINGS:

(All positions require Live Scan fingerprint clearance, valid CA driver's license and safe driving record, health screening / TB test)

MASTER'S DEGREE REQUIRED

SUPPORTIVE SERVICES COORDINATOR – PASADENA- Must be a license-waivered MSW/ASW or MFT-I with a minimum of two years experience working with homeless chronically mentally ill (CMI) adults. The shift is Monday-Friday 9 am-5:30 pm with flexibility required for mandated trainings and on-call duties.

TEAM LEADER – NORWALK- Must have a Master's degree and maintain current BBS registration (i.e. MSW,ASW; MFT-I) with at least 4 years experience working with chronically mentally ill persons. In addition to strong clinical skills, we are also seeking someone with exceptional time management, administrative, organizational, and interpersonal skills. The shift is Monday-Friday 10:30 am-7:00 pm with flexibility required for mandated trainings and on-call duties.

BACHELOR'S DEGREE REQUIRED

MENTAL HEALTH WORKER – NORWALK- Must have a Bachelor's degree and two years experience with mentally ill adults. The shift is Monday-Friday, 8am – 4:30pm.

DIRECTOR OF RESOURCE DEVELOPMENT – LOS ANGELES- Five years of progressively responsible fundraising and marketing communications experience, most especially in Major Gifts programs development and implementation. The shift is to be determined.

CLINICAL LICENSURE REQUIRED (LMFT / LCSW)

PROGRAM HEAD OF SERVICES – NORWALK- Must be a licensed mental health professional (LCSW, LMFT). Must have at least five years experience working with homeless chronically mentally ill adults, plus at least two years experience under the Department of Mental Health's Rehabilitation Program. Must be able to provide clinical supervision and licensure hours to registered interns. The shift is Monday-Friday 9:00 am-5:30 pm with flexibility required for mandated trainings and on-call duties.

Please email a cover letter, resume, and the job title (s) of the position (s) you are interested in to Human Resources at jtakata@homesforlife.org & tnguyen@homesforlife.org .

To learn more about our residential programs and services, please visit www.homesforlife.org



A Department of Ventura County Health Care Agency

HEALTH, RECOVERY & WELLNESS

Seelig, M.D.
John, M.D.
John, M.D.
John, M.D.
John, M.D.
John, M.D.

EMPLOYMENT AT VCBH

The Behavioral Health Department of Ventura County offers employment opportunities for the following unlicensed clinicians pursuing a license in the State of California. Below are job categories for recent graduates from each type of eligible license category:

MFT intern: **Behavioral Health Clinician I or II**

Associate clinical social worker: **Behavioral Health Clinician I or II**

Unlicensed psychologist: **Staff Psychologist**

Recent graduates can get information on current "employment opportunities" at the Ventura County Human Resources website: <http://www.ventura.org/hr>.

POSITIONS OPEN FOR RECRUITMENT:

- View positions that are currently open for recruitment: either scroll down alphabetically by title or select by job categories or key words.
- If the job is posted for recruitment then click on the title of the job posting and click on the "Apply" tab to enter your information.

POSITIONS NOT CURRENTLY OPEN FOR RECRUITMENT:

- If this job is not open for recruitment: search in "Job Descriptions" for the job title. You can find this tab listed in the menu on the left side of page. Click on the job description to read information about the job, benefits, and salary range. In the description of the position you can click on the tab that says "Email me when jobs like this become available". You will then be notified when the position is posted.

FIRST TIME APPLICANTS:

- You must create a username and password with governmentjobs.com. To do this, click on any job posting title, click "Apply", then click on "Create an Account" and it will take you through the registration process. It is advisable that interested applicants set up their account with governmentjobs.com and enter all of their application materials even if the job is not currently posted. When one receives the notice that the position is posted for recruitment then the application is ready and it is a quick process to apply.
- This registration is not an application. In order to apply for a specific position you must then go back to the "Employment Opportunities", pick a job title when it is listed for recruitment, and again click on "Apply" to submit the application.



Are you interested in **Substitute Teaching**?

DirectEd Solutions is an educational staffing company that services charter schools in the Los Angeles area. We are looking for passionate educators and competent substitute teachers. This is a chance to gain experience in inner city charter schools while building relationships that will benefit your long term career goals.

The minimum qualifications to apply are:

- 30 Day Substitute Permit or K-12 CA Teaching Credential
- Current TB Test

If you are interested in applying, please visit our website:

www.direct-edsolutions.com



Email: inquiries@direct-edsolutions.com

Phone/Fax: 818-741-2256

Address: 6303 Owensmouth Ave. Fl 10 Woodland Hills, CA 91367



LOS ANGELES UNIFIED SCHOOL DISTRICT
HUMAN RESOURCES DIVISION
CERTIFICATED WORKFORCE MANAGEMENT & QUALIFICATIONS

Be a Teacher in Los Angeles Apply Online

Event: **Pepperdine Spring Career Connections Fair 2014**

Application Location: **CA: Pepperdine University**

Visit www.teachinla.com

1. Complete online application
2. Include APPLICATION LOCATION indicated above

After your application has been reviewed by the Online Department, be prepared to submit the requested documents listed below (*if applicable*):

- ☐ Credential/Certification/License
- ☐ Basic Skills Requirement (i.e. CBEST or Approved Out-of-State Basic Skills Exam)
- ☐ Subject Matter Exam i.e. CSET/PRAXIS, Subject Matter Waive or NCLB Compliance Letter
- ☐ Official Transcripts (front and back) with BA/BS degree posted
- ☐ Current References, **original and on letterhead**, signed and dated from **all** employers covering the last three (3) years of employment
- ☐ Final Student Teaching Evaluations (For teachers with less than 5 years of experience.)
- ☐ Resume
- ☐ Additional references and documents may be requested

Darvina Bradley, Recruitment Specialist
darvina.bradley@lausd.net

Bryan Johnson, Recruitment Specialist
bmj0762@lausd.net

LOS ANGELES UNIFIED SCHOOL DISTRICT
HUMAN RESOURCES DIVISION
CERTIFICATED WORKFORCE MANAGEMENT & QUALIFICATIONS

APPLICANT CHECKLIST

SCHOOL PSYCHOLOGIST, SCHOOL PSYCHOLOGIST--BILINGUAL, SPANISH-SPEAKING
AND SCHOOL PSYCHOLOGIST FOR THE DEAF

- ☐ Credentialed
☐ Intern

Please use this checklist to determine if you have included all necessary materials before submitting your supporting documents to District Psychological Services.

- ☐ 1. Have you accurately completed your online application?
- ☐ 2. Have you obtained current original LETTER(S) OF RECOMMENDATION and CONFIDENTIAL/NON-CONFIDENTIAL REFERENCE FORM(S) for each referent for your most recent three years of experience? Additional letter/s of recommendation may be required.
- ☐ 3. Have you submitted verification of appropriate California credential? (ie. print-out from CTC website)
- ☐ 4. Have you submitted a photocopy of transcripts verifying a master's degree?
- ☐ 5. If applicable, have you submitted evidence verifying fluency in the appropriate communication skill?
- ☐ 6. Have you submitted a current resumé and cover letter (letter of intent)?
- ☐ 7. If applicable, have you included a copy of your CBEST transcript verifying passage?

After completing the above, please sign and date below and submit this checklist with your required documents to:

Rosa Rodriguez, Recruitment Specialist
Los Angeles Unified School District
Special Education Certificated Employment Operations
333 South Beaudry Avenue, 15th Floor
Los Angeles, CA 90017

SIGNATURE

DATE

SS#: _____



Los Angeles Unified School District

2013-2014 Special Services Salary Table, Schedule 33D*

School Psychologist

Traditional Calendar (180 Days)

Year 1	Year 2	Year 3	Year 4	Year 5
\$61,433	\$64,828	\$68,451	\$72,419	\$76,505

Personnel Policy Guide: S9

Los Angeles Unified School District

First Career Increment - Pay Scale Group D, Pay Scale Levels 11-15

<u>A Basis Annualized</u>	<u>E Basis Annualized</u>	<u>B Basis Annualized</u>	<u>C Basis Annualized</u>
2,767 (2,661)	2,480 (2,374)	2,343 (2,237)	2,162 (2,056)

Second Career Increment - Pay Scale Group D, Pay Scale Levels 21-25

<u>A Basis Annualized</u>	<u>E Basis Annualized</u>	<u>B Basis Annualized</u>	<u>C Basis Annualized</u>
3,430 (3,299)	3,076 (2,945)	2,904 (2,773)	2,682 (2,551)

Third Career Increment - Pay Scale Group D, Pay Scale Levels 31-35

<u>A Basis Annualized</u>	<u>E Basis Annualized</u>	<u>B Basis Annualized</u>	<u>C Basis Annualized</u>
4,925 (4,736)	4,415 (4,226)	4,170 (3,981)	3,849 (3,660)

Fourth Career Increment - Pay Scale Group D, Pay Scale Levels 41-45

<u>A Basis Annualized</u>	<u>E Basis Annualized</u>	<u>B Basis Annualized</u>	<u>C Basis Annualized</u>
6,405 (6,160)	5,742 (5,497)	5,423 (5,178)	5,006 (4,761)

Doctorate Degree - Effective 7/01/08, degree differentials are hourly rates paid as worked.

<u>A Basis Annualized</u>	<u>E Basis Annualized</u>	<u>B Basis Annualized</u>	<u>C Basis Annualized</u>
1,494 (1,437)	1,339 (1,282)	1,265 (1,208)	1,168 (1,111) (6 hour) (1,111) (8 hour)

An employee who is reassigned from a monthly payment rate salary table to the Special Services Salary Table shall be allocated to the rate on the new pay scale group which is next above the rate to which entitled on the employee's former table, including degree and responsibility differentials and career increment. An employee returning to the same pay scale group within the same school year shall not be allocated to a higher pay scale level than that to which previously entitled during that same school year. An employee returning to a pay scale group on this table within 39 months will be placed on the employee's former pay scale level if it is to the employee's advantage. An employee reassigned to a class allocated to the same pay scale group as that of the former class shall be allocated to the same pay scale level. An employee reassigned to a class allocated to a higher pay scale group than that of the employee's former class shall be allocated to the next higher rate on such higher pay scale group.

An employee who is promoted to a class on the Special Services Salary Table with a higher maximum rate than that of the former monthly payment rate classification shall have the pay scale level placement recomputed pursuant to Section 4.1 of Appendix E of the District/UTLA Agreement if the salary to which the employee would have been entitled in the former class is increased within three calendar months of the reassignment to the higher class.

Note: For employees working a complete school year, the following is applicable:

A basis Annualized: 260 paid days; 2,080 hours	(A basis 10 furlough days: 250 paid days; 2,000 hours annual).
E basis Annualized: 234 paid days; 1,872 hours	(E basis 10 furlough days: 224 paid days; 1,792 hours annual).
B basis Annualized: 221 paid days; 1,768 hours	(B basis 10 furlough days: 211 paid days; 1,688 hours annual).
C basis Annualized: 204 paid days 1,224 hours (6 hours) 1,632 hours annual (8 hours).	(C basis 10 furlough days: 194 paid days; 1,164 hours annual (6 hours); 1,552 hours annual (8 hours).



Hiring Process:

Step 1: Submit Application

Applications should include the information listed below. Deadlines for the application are listed on this page, and applicants are encouraged to apply for the earliest possible deadline. All applications should be submitted via the "JOIN OUR TEAM" section on brightstarschools.org.

Completed application includes:

- ☐ Cover letter
- ☐ Resume
- ☐ Two Letters of Recommendation
- ☐ Teaching Credential Copy

Step 2: Video interview

Step 3: In-Person Interview with Bright Star Schools

Step 4: Selected candidates will be invited to an in-person interview on a particular campus, and give a model lesson to students.

Application Deadline	Date	Model Lesson and Interview Window
Priority deadline	Sunday, Feb 23rd	March 17 th - March 28 th
2 nd deadline	Sunday, March 30th	April 14 th -April 18 th
Final deadline	Sunday, April 20th	May 26 th -June 6 th



Job Description: High School or Middle School Teacher

Reporting to: Principal

Bright Star Schools will comply with the California Charter Schools Act with respect to teacher certification. All certified teachers teaching core subjects, and uncertified teachers teaching non-core subjects, will comply with subject matter competency and all other requirements of the No Child Left Behind Act. Teachers will help develop and implement the curriculum. All teachers report to the Principal.

Qualifications & Experience:

- Bachelor's degree
- Single Subject CA Credential or Multiple Subject Credential with Authorization in Desired Subject
- Two years of urban teaching experience preferred
- Bilingual Spanish or Korean preferred
- Possession of either Bilingual, Cross-Cultural, Language and Academic Development (BCLAD) certificate; Cross-Cultural, Language and Academic Development (CLAD) certificate; Bilingual Certificate of Competence (BCC); or Language Development Specialist (LDS) certificate desirable

Teacher Traits:

- Belief that every child is deserving an excellent education which prepares him/her for college and life beyond
- Demonstrated ability to teach whole child in an inclusive setting using modifications and accommodations
- Willingness to receive feedback, engage in frequent dialogue and ability to self-reflect
- Life-long learner
- Collaborative
- Belief in data-driven instruction
- Firm, kind approach to managing student behavior
- Technologically competent
- Entrepreneurial spirit and creative problem solver
- Sense of humor and love of teaching

Responsibilities:

Whole School Responsibilities

- Uphold Bright Star Schools' mission and values
- Demonstrate genuine care for *all* students
- Embrace existing school-wide management systems and promote high standards of behavior
- Collaborate with school leaders, providing input to improve Bright Star programs
- Actively participate in professional development sessions
- Communicate professionally with peers, supervisors, parents, and students
- Participate in 20 BSS after school/evening activities: i.e., Parent conferences, overnight trips
- Commit to a longer school day and calendar year
- Adhere to Bright Star's professional attire guidelines
- Supervise bathroom breaks and participate in rotating detention supervision
- Uphold attendance procedures each period using School Information Systems (SIS)
- Enthusiastically participate in school-wide culture events (i.e., Songfest, academic assemblies, and Field Day)
- Perform other duties as assigned

Instructional Responsibilities

- Adhere to Bright Star curriculum maps and guidelines

Bright Star Schools is an equal opportunity employer.



- Create weekly lesson plans/overviews
- Plan rigorous lessons aligned to the California State and/or California Common Core standards
- Differentiate lesson plans for a variety of learners (kinesthetic, gifted students, English Language Learners, and/or students with IEPs, etc.)
- Implement feedback from administrator regarding lesson plans and/or execution
- Establish and maintain positive classroom environment
- Implement Bright Star's Expected School Learning Results
- Support instruction with school-wide supplemental programs (i.e., Reading Counts/Study Island)
- Maintain grade books and meet reporting deadlines (i.e., OT/CU or progress reports)
- Communicate with families regarding student academics and behavior
- Collaborate with Special Education Team
- Use planning periods for the advancement of student academics
- Tutor students in need of remediation
- Perform other adjunct duties

Salary and Benefits:

Salary: In consideration of the longer school day and school year, BSS salary is based on experience and education (5% over LAUSD pay scale). Bright Star Schools will honor up to 5 years on the LAUSD salary scale.

Status: Full Time

Start Date: An exceptional candidate will assume a full time role no later than August 1, 2014.

Location: Los Angeles, CA

Benefits: Health, dental, vision, life insurance, short-term disability, 403n plan, personal time off, holidays

Bright Star Schools is an equal opportunity employer.



Full-time Teaching Assistant

School Overview

Endeavor College Prep is a kindergarten through eighth grade charter school serving children from the historically underserved neighborhoods of Boyle Heights, Lincoln Heights, and surrounding eastside communities. Our student population is 96% Latino and 94% free/reduced lunch, and among the highest performing in the state. We earned a 2013 API score of 870, are ranked 10 out of 10 for similar schools, became a California Distinguished School in 2012, and were ranked #8 in USC's annual list of top charter schools in the state.

Our team is made up of a highly collaborative group of teachers who share a passion for closing the achievement gap. We have high expectations for academics and discipline, and simultaneously value joy in the classroom, making learning enjoyable for our scholars and teachers. We believe that a teaching assistant would be an incredible help to our existing teacher team, and we also hope that the right TA might become a full-time teacher with us next year.

Position Summary

The teaching assistant's primary duties include:

- Helping classroom teachers and our special education teacher with small group interventions in reading, math, and/or writing
- Administering one-on-one assessments with students
- Working with teachers to build school culture, following the school-adopted norms and consequences
- Supervising students during morning break and/or lunch/recess
- Supervising students during homework help after school
- Translating for parent meetings (if bilingual)
- Making copies, grading papers, entering grades, updating trackers, and changing bulletin boards for classroom teachers as needed
- Assisting in office as needed
- Attending relevant professional development sessions
- When needed, TAs with an appropriate credential may substitute teach for classroom teachers

Requirements

- Philosophical alignment with the college preparatory mission of the school
- The desire to work as part of a team
- Commitment to continuous professional development
- High behavioral expectations and strong classroom management skills
- Bachelor's Degree, OR 90 units completed and currently enrolled in a university program
- If hired:
 - Fingerprint clearance
 - TB test clearance
 - CPR/First Aid clearance
 - Emergency substitute credential

Endeavor College Preparatory Charter School prepares our students with the academic skills, character traits, and intellectual discipline to excel as leaders in high school, college, and their community.

Preferred Qualifications

- CA teaching credential (in special education, multiple subject, ELA, or math) with English learner authorization
- Proof of CA basic skills requirement (CBEST) met
- Fluency in Spanish

Application Process

- Answer the following three essay questions with a thoughtful response of no more than ½ page each. Use Times New Roman, size 12 font, single-spaced.
 1. Why are you interested in teaching at Endeavor College Prep?
 2. Looking at the job description, what excites you the most? What concerns you the most?
 3. What are your long-term careers plans? Why?
- Save your responses as a Word document titled "TA_firstinitial.lastname_essays.doc".
- Send an email to Michelle Jasso at mjasso@endeavorcollegeprep.org with the following three attachments:
 - a. A thoughtful cover letter
 - b. Your resume (including GPA)
 - c. Responses to the essay questions listed above, formatted appropriately
- The e-mail subject line should read: "TA: [full name]".
- Upon review of your resume and the essay responses, we will contact the most promising candidates for an interview.



WHAT IF

all children knew they had unlimited potential?

Become part of a "Team & Family" of outstanding educators dedicated to doing whatever it takes to help our students climb the mountain to and through college. Teach at a KIPP LA School.

KIPP:LA Schools



"My KIPP LA Team & Family motivates me to be the best educator that I can be. They provide numerous opportunities for professional development, including school visits, online collaboration, and classroom coaching. Their support allows me to keep my focus on my students."

Maya Garcia, Kindergarten Teacher,
KIPP Comienza Community Prep



"One of the great things about being at KIPP is that you're surrounded by people who have the same motivation that you have, and who have the same vision for what education is. It's not just a job for me, and it's not a job for anybody who I work with...it's what we are doing for the world."

Tommy McConnell, 5th Grade Math Teacher,
KIPP Scholar Academy

TEACH. LEARN. GROW. JOIN KIPP LA SCHOOLS.

KIPP LA Schools operates high-performing, college-preparatory public charter elementary and middle schools in South and East Los Angeles. KIPP LA is expanding to 17 schools and will serve nearly 9,000 students and alumni by 2018. We seek experienced and talented teachers for grades K-8. Apply today at <http://go.kippla.org/teach>.

KIPP: ACADEMY OF OPPORTUNITY

KIPP: ACADEMY OF INNOVATION

KIPP: COMIENZA COMMUNITY PREP

KIPP: EMPOWER ACADEMY

KIPP: ILUMINAR ACADEMY

KIPP: LAPREP

KIPP: Philosophers Academy

KIPP: RAÍCES ACADEMY

KIPP: SCHOLAR ACADEMY

KIPP: SOL ACADEMY

KIPP: Vida PREPARATORY ACADEMY

WHAT IF

all of your colleagues
were on the same page?

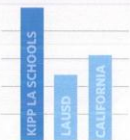
HIGH EXPECTATIONS

Relentlessly aiming to close the achievement gap in low-income communities, KIPP LA teachers go above and beyond to ensure students realize their dreams and become productive citizens of the world.



FOCUS ON RESULTS

KIPP schools nationwide have been widely recognized for narrowing the achievement gap and offering all children a high-quality public education.



KIPP LA teachers have led our elementary and middle schools to outperform neighboring traditional public schools, as well as LAUSD and state averages.

CHARACTER IN THE CLASSROOM

Over the last ten years, KIPP LA has realized that character education is critical to help our students successfully climb the mountain to and through college. As a result, all of our schools infuse character into their curricula, encouraging students to develop grit, zest, self-control, optimism, gratitude, social intelligence, and curiosity.



More than 75% of KIPP
LA alumni are persisting
in college.



WHERE WILL YOU TAKE US?

Innovators wanted.

Access the resources you need to teach at your best.

Collaborate with other passionate educators.

Capitalize on opportunities to grow as a leader in your classroom and in your school.

KIPP LA's schools are hiring for a variety of K-8 teaching positions. To submit an application, please visit our web site: <http://go.kippla.org/teach>.

LEARN MORE:

➔ www.kippla.org/careers

f www.facebook.com/kipplaschools

t www.twitter.com/kipplaschools

KIPP LA Schools is strongly committed to hiring a diverse and multicultural staff, and we encourage applications from traditionally under-represented backgrounds. KIPP LA does not discriminate on the basis of race, color, gender, handicap, age, religion, sexual orientation, nationality, or ethnic origin.



Prospective Teacher Open House

Have you ever wondered...

- What is Green Dot Public Schools (GDPS) and how is it different?
- Who attend GDPS schools?
- What successes has GDPS had with its students?
- What is it like to be a teacher at GDPS?
- What leadership and growth opportunities does GDPS offer its teachers?
- How is GDPS on the leading edge of teacher supports?
- How can I become a GDPS teacher?

**If you are a middle school or high school teacher
(or about to become one),
please join us**

**Tuesday, March 18th from 11am – 1pm
or**

Tuesday, April 1st from 5pm – 7pm

**Hear from our administrators, teachers and students ~
and take a tour of one of our South LA middle schools (March 18th) or
one of our Watts-based high schools (April 1st)**

To RSVP and obtain location specifics, visit

www.greendot.org/rsvp



Opportunities For Learning Public Charter Schools

Job Opportunities

Are you looking for a career in education with a growing organization that prides itself on helping their students reach their goals, while working alongside other motivated employees? Would you like to work for a school that cares about seeing their students succeed?

If the answer to these questions is **YES**, then Opportunities For Learning is the right place for you!!

Opportunities For Learning is a public charter school that caters to the "at-risk" student population. Our program is independent study based and teachers work with students one-on-one.

We are looking for enthusiastic candidates who have a passion for working with "at-risk" youth. **Full-time positions** are now available. Our company offers the following positions:

- ♦ **Teachers**
- ♦ **Small Group Instruction Teachers**
- ♦ **Academic Recovery Center Coordinator**
- ♦ **Substitute Teachers**
- ♦ **Speech/Language Pathologist**
- ♦ **RSP Teachers**

If you are interested in joining our team, please visit EdJoin at www.edjoin.org to see all of our current positions. Visit our website at www.emsofl.com.



Kindergarten/Pre-K English Assistant

Daqing and Kunshan, China - Taipei, Taiwan

Tsai Hsing School is an esteemed institution with a rich history in Taipei and new kindergarten branches in Daqing and Kunshan, China, that will open in the fall of 2014. Our English program combines content-based instruction, student-centered activities and traditional methods to promote academic and real-world usage of the English language.



COMPENSATION

1. Average monthly salary of \$1000, no experience or certification required but preference given to those currently seeking certification or enrolled in a teacher education program.
2. Lodging provided.
3. Round trip airfare provided.

DUTIES

1. Approximately 25 assistant teaching periods per week and on campus daily for entirety of school day. Assist with submission of lesson plans when requested.
2. Attend all required meetings during school hours and weekend commitments such as teacher parent meetings and other special events.
3. Assist with correction of all applicable student work.
4. Assist in applicable English language events and competitions during school day.
5. Adhere to school-determined lesson pace of special content relevant to periodical exams.

CANDIDATE REQUIREMENTS

1. Must be able to interview in Downtown LA, Taipei or over teleconferencing.
2. Must be able to provide at least 3 professional references.
3. Preference given to candidates with experience in the classroom and/or who are seeking certification and/or enrolled in a teacher training program.
4. No knowledge of Mandarin is necessary.

MISCELLANEOUS

1. Health insurance provided by school.
2. School will assist with work permit application.

CALENDAR

1. Commitment of 1 school-year-long term are from August 20, 2014 to July 1, 2015.
2. Approximately 3 weeks paid vacation (over Chinese New Year break)*.
3. Paid time off for local holidays and days between semesters*.
4. Short-term positions available.

**Actual time off depends on Education Bureau calendar for that year*





Blended Learning for Alliance School Transformation

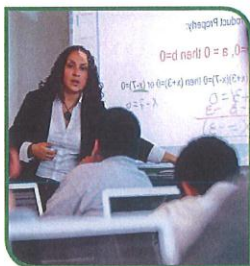


BLAST Blended Learning for Alliance School Transformation

BLAST is an educational model that fully integrates technology into the classroom, building upon Alliance's successful college prep curriculum. The model was piloted in 2010-11 at two Alliance high schools and has since expanded to five high schools and five middle schools.

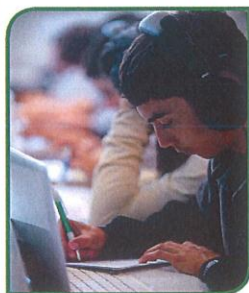
Makes learning more relevant, personalized, and dynamic for students. Students rotate among two to three learning stations during a two-hour block schedule, keeping them engaged and involved in their own learning. Students, teachers, and parents receive real-time data allowing them to monitor how they are doing in each class.

A replicable, scalable, and sustainable model. While an upfront investment is required, cost savings from efficiencies in human capital and online instructional materials allow BLAST schools to replenish and upgrade hardware and software while maintaining a revenue surplus to reinvest in new schools.



TEACHER-LED,
SMALL GROUP
INSTRUCTION

INDIVIDUALIZED ONLINE LEARNING



COLLABORATIVE,
PROJECT-BASED
LEARNING

Alliance Christine O'Donovan Middle Academy
Alliance College-Ready Middle Academy 5
Alliance College-Ready Middle Academy 12
Alliance Jack H. Skirball Middle School
Alliance Richard Merkin Middle School

BLAST Middle Schools

Alliance Cindy & Bill Simon Technology High School
Alliance Judy Ivie Burton Technology High School
Alliance Susan & Eric Smidt Technology High School
Alliance Tennenbaum Family Technology High School
Alliance William & Carol Ouchi High School

BLAST High Schools

Alliance Schools

Downtown Los Angeles

Alliance Richard Merkin Middle School
2023 South Union Avenue, Los Angeles, CA 90007
213-748-0141

Alliance College-Ready Academy High School 16
1575 West 2nd Street, Los Angeles, CA 90026
213-241-8533

Alliance Dr. Olga Mohan High School
644 West 17th Street, Los Angeles, CA 90015
213-342-2870

Alliance Gertz-Ressler High School
2023 South Union Avenue, Los Angeles, CA 90007
213-745-8141

Glassell Park/Lincoln Heights

Alliance College-Ready Middle Academy 5
211 Avenue 20, Los Angeles, CA 90031
323-987-1680

Alliance Environmental Science and Technology HS
2930 Fletcher Drive, Los Angeles, CA 90065
323-739-0560

Alliance Susan & Eric Smidt Technology High School
211 Avenue 20, Los Angeles, CA 90031
323-352-3206

Alliance Tennenbaum Family Technology High School
2050 San Fernando Road, Los Angeles, CA 90065
323-276-5400

East Los Angeles

Alliance College-Ready Middle Academy 8
3651 East 1st Street, Los Angeles, CA 90063
213-943-4930

Alliance Marc & Eva Stern Math and Science HS
5151 State University Dr., Los Angeles, CA 90032
323-987-2144

Alliance Media Arts and Entertainment Design HS
113 South Rowan Avenue, Los Angeles, CA 90063
323-859-0750

South Los Angeles/Watts

Alliance Christine O'Donovan Middle Academy
5355 South 4th Avenue, Los Angeles, CA 90043
323-294-3172

Alliance College-Ready Middle Academy 4
9719 South Main Street, Los Angeles, CA 90003
323-451-3009

Alliance College-Ready Middle Academy 7
2941 West 70th Street, Los Angeles, CA 90043
323-920-4388

Alliance College-Ready Middle Academy 12
100 East 49th Street, Los Angeles, CA 90011
323-238-7270

Alliance Jack H. Skirball Middle School
603 East 115th Street, Los Angeles, CA 90059
323-905-1377

Alliance Cindy & Bill Simon Technology Academy
10720 Wilmington Avenue, Los Angeles, CA 90002
323-744-2122

Alliance College-Ready Academy High School 5
4610 South Main Street, Los Angeles, CA 90037
213-342-2874

Alliance Health Services Academy High School
12226 South Western Ave., Los Angeles, CA 90047
323-972-9010

Alliance Judy Ivie Burton Technology Academy HS
10101 South Broadway, Los Angeles, CA 90003
323-920-6125

Alliance Renee & Meyer Luskin Academy High School
2941 West 70th Street, Los Angeles, CA 90043
323-905-1210

Alliance William & Carol Ouchi High School
5356 South 5th Avenue, Los Angeles, CA 90043
323-596-2290

Huntington Park

Alliance College-Ready Middle Academy 9
5886 Compton Avenue, Los Angeles, CA 90001
213-943-4930

Alliance Collins Family College-Ready High School
2071 Saturn Avenue, Huntington Park, CA 90255
323-923-1588

Alliance Margaret M. Bloomfield High School
7907 Santa Fe Avenue, Huntington Park, CA 90255
213-943-4930

San Pedro

Alliance College-Ready Academy High School 20
461 West 9th Street, San Pedro, CA 90731
213-943-4930





What makes Alliance College-Ready Public Schools a great place to work?

We offer our teachers comprehensive and competitive health benefits! Alliance offers an array of benefit choices with multiple medical HMOs and PPOs to choose from, as well as rich dental, vision, and life insurance plans.

Insurance

Employer contribution of \$840 per month to cover medical, dental and vision insurance available 30 days after your hire date. Group life insurance of \$50,000 paid in full by Alliance.

Teacher Benefit Highlights

Voluntary Benefits

Supplemental Insurance with Colonial Life is available to all Alliance Staff. This benefit provides individual and family auxiliary coverage for accident, cancer, and disability insurance, as well as several other insurance coverage options.

Retirement

To make sure you are financially prepared for retirement, Alliance participates in the CalSTRS Retirement Plan - it's never too early to save!

Additional Benefits include:

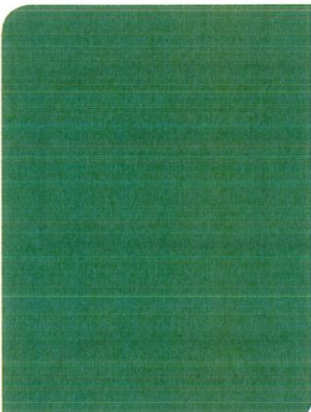
- 10 paid sick days per year, maximum accrual of 30; and up to 5 days off for bereavement.
- All legal national holidays off.
- Spring Break and Winter Break off.





Alumni

“ The teachers are caring. They listen to us and know us as individuals. If we have any problems, we can always count on them to be there. ”



“ At Alliance you're not just a number, you're an individual. The principal knows your name and knows your parents. That personal experience helped keep me on track. ”

“ Our parents started out afraid to dream that their children could go to college. Now they are sending them off to schools across the state or country. ”



Principals



Teachers

“ There is a genuine teacher support model here at Alliance. Administrators work with open doors at all times ready to listen to any teacher concerns. School-wide student expectations are not only stated, but followed through, enhancing the school culture. ”

“ I like the autonomy and the emphasis on academics at Alliance. As a teacher, I've been encouraged to try new strategies and to grow as a professional...Alliance supports my efforts and communicates our vision to parents, which emboldens me to work with students, and to demand that they give their best. ”



Testimonials





LEVERAGING SUCCESS

Excellence Is...

The **Excellent Schools Network (ESN)** is a select group of BES schools that have demonstrated strong academic results, sound organizational practices, and the genuine ability to close the achievement gap in their communities.

ESN members must meet the following criteria to gain admission to and remain in the ESN: demonstrate proven, consistent results; commit to growth; share a common design that is independently executed; cultivate strong community ties; and support the ESN and its members.

The mission of the ESN is to champion high-performing charter schools by leveraging their success to achieve greater results, grow wisely, and transform education for more students in more schools. This is achieved by supporting ESN schools in the areas of leadership development, mission measurement, and talent and recruitment.



ESN Schools

There are currently 17 member schools in the ESN, with 40 campuses among them, serving a total of 7,500 students.





Valley Trauma Center

Healing • Advocacy • Education

California State University

Northridge

CLINICAL INTERNSHIP OPPORTUNITIES

for

Marriage and Family Therapist Trainees/Interns and Master in Social Work Interns



- Valley Trauma Center's 60 hour Certified training as an In Home Outreach Counselor, providing individual, family, child and group therapy
- Weekly Clinical Supervision by licensed LMFTs, LCSW's and PhDs
- A supportive clinical environment to learn and grow as a clinician
- Client hours that make it easy for you to meet all of the BBS requirements (Hours for individual, group, adult & child services)
- A unique range of experience working with a wide variety of clinical cases
- In-Service trainings that are free to you on topics designed to enhance your clinical skills

To apply:

Please e-mail Catalina@valleytrauma.org for an application.

Bilingual candidates are strongly preferred, but not required

Valley Trauma Center

Services

24-Hour Crisis Hotline:

Runs 7 days a week, 365 days a year, and is answered by volunteer Counselors and California State Certified Rape Crisis Advocates who provide information, referrals, and crisis counseling over the telephone.

Accompaniments:

If someone has been assaulted, a volunteer California Certified Rape Crisis Advocate or Counselor will meet the survivor at the hospital, police station, or court to provide on-site emotional support, information and advocacy.

Counseling:

Short and long-term individual counseling is offered to individuals, couples, families, and groups at Valley Trauma Center offices or in the client's home. Counseling is available to families who are at-risk for or have experienced child abuse and/or neglect, families and/or individuals who have experienced domestic violence and/or sexual assault, and those who have dealt with substance abuse and/or mental health issues. Support groups and psychoeducational classes are also available.

Volunteers must complete the required training sessions and must commit to volunteer at Valley Trauma Center for a minimum of one year.

For further information on volunteer opportunities, please contact Jessica

Catalina@valleytrauma.org

Our next training begins:

May, 2014!!!

We look forward to hearing from you!

Valley Trauma Center

Northridge Office

8700 Reseda # 209
Northridge, CA 91324

Santa Clarita Office

28231 Avenue Crocker, Suite 30
Valencia, CA 91355
www.valleytrauma.org



Valley Trauma Center

Healing • Advocacy • Education

VOLUNTEER OPPORTUNITIES

24-Hour Hotline

Santa Clarita Valley:

(661) 253-0258

San Fernando Valley:

(818) 886-0453

California State University
Northridge

VOLUNTEER OPPORTUNITIES



The Valley Trauma Center offers a variety of volunteer roles. The program is flexible and allows for volunteers to participate when they are available. Whether you are available in the daytime, evenings, or on weekends, there are many ways to become involved. You can volunteer at our office, from your home, or at one of our events.

The different types of volunteer positions are...

Sexual Assault Advocate:

Answer hotline calls, provides emotional support at local hospitals, police stations, and courts to survivors of sexual victimization/domestic violence and their friends/families. Attends a 60 hour Sexual Assault Certification training, in-service trainings and supervision regularly. Assists in community outreach 8 hours per year.

Counselor Trainee/Intern:

Sees clients on an individual, couple, family, or group basis in-home and/or in the office for BBS hours, attends a 60 hour Sexual Assault Certification training, in-service trainings and supervision, takes hotline/accompaniment shifts, and assists in community outreach 10 hours per year. *All applicants must be current graduate students or have graduate degrees to apply for this position.*

Community Service Volunteer:

Provides assistance in community outreach 10 hours per year and assists with special events and fundraising for the agency.

Administrative Volunteer:

Provides administrative support to staff at our 3 different locations. Will be trained on basic office duties such as, answering phones, filing, and data entry.

“Volunteering at the Valley Trauma Center has shaped the person that I am today. Although it has its challenges... the rewards are immeasurable. It has taught me the beauty of reaching out to others and shown me what an effect I can have on another person’s life. It has truly been one of the best decisions of my life.”

~Nelie Farivar, Sexual Assault Advocate

~~~~~

“In my heart, I know that I’m right where God wants me to be – helping others and growing from my experiences at Valley Trauma Center.” ~Sheba Shiver, Rape Crisis Advocate/Counselor Intern

~~~~~

Volunteers are essential to the mission of Valley Trauma Center.

As a community based organization, the center relies on volunteers to promote and sustain its ongoing programs of crisis intervention, advocacy, education, and prevention. The rewards of volunteering are many: helping people in crisis, working to end violence, educating the public, and receiving ongoing support, training and supervision.

~~~~~







# Valley Trauma Center

Healing • Advocacy • Education

California State University

**Northridge**

## Clinical Trainee/Internship Program Application

| Contact Information                                                                                                                         |  |
|---------------------------------------------------------------------------------------------------------------------------------------------|--|
| Name                                                                                                                                        |  |
| Street Address                                                                                                                              |  |
| City, State, Zip Code                                                                                                                       |  |
| Cell or Home Phone                                                                                                                          |  |
| Email Address                                                                                                                               |  |
| Date of Birth                                                                                                                               |  |
| Please check the appropriate box:                                                                                                           |  |
| <input type="checkbox"/> MFT Trainee <input type="checkbox"/> MFT Intern <input type="checkbox"/> MSW Intern <input type="checkbox"/> Other |  |
| Position                                                                                                                                    |  |
| Position you are applying for (if known):                                                                                                   |  |

| Education                                                                           |
|-------------------------------------------------------------------------------------|
| Bachelor's Degree (Name of School and Degree Type):                                 |
| Master's Degree (Name of School): <b>Circle one</b> - enrolled in / graduated from: |
| If Currently Enrolled- Start Date:                                                  |

| Availability                                                                          |                                                                                                                          |
|---------------------------------------------------------------------------------------|--------------------------------------------------------------------------------------------------------------------------|
| During which days/times are you available to volunteer? (Including Supervision hours) |                                                                                                                          |
| ___ Monday      Hours:                                                                | ___ Saturday      Hours:                                                                                                 |
| ___ Tuesday      Hours:                                                               | ___ Sunday      Hours:                                                                                                   |
| ___ Wednesday      Hours:                                                             | <b>How often will your availability change?</b><br><b>How flexible is this schedule?</b><br><b>AVAILABLE START DATE:</b> |
| ___ Thursday      Hours:                                                              |                                                                                                                          |
| ___ Friday      Hours:                                                                |                                                                                                                          |

| Commitment                                                                                                                    |
|-------------------------------------------------------------------------------------------------------------------------------|
| Can you make a long-term commitment to VTC?<br>___ 9 months (School Year)      ___ 1 year      ___ 1.5 years      ___ 2 years |

| Language Skills                                         |                                                          |
|---------------------------------------------------------|----------------------------------------------------------|
| What language(s) do you speak/write?                    |                                                          |
| SPOKEN: ___ Fluent      ___ Proficient      ___ Minimal | WRITTEN: ___ Fluent      ___ Proficient      ___ Minimal |
| 2 <sup>nd</sup> Language:                               |                                                          |
| SPOKEN: ___ Fluent      ___ Proficient      ___ Minimal | WRITTEN: ___ Fluent      ___ Proficient      ___ Minimal |

### Other Related Questions

1. Why are you interested in volunteering with Valley Trauma Center? (Check all that apply)

- ☐ Working with trauma
- ☐ Providing crisis intervention
- ☐ Working with clients who have experienced sexual assault/ abuse
- ☐ Working with clients who have experienced domestic violence
- ☐ Working with clients who have experienced child maltreatment
- ☐ Working with foster children and foster families / Adoptive children & families
- ☐ Running groups
- ☐ Providing Parent training and education
- ☐ Working in homes
- ☐ Other:

2. Do you have or are you a party to any civil or criminal proceedings involving the Department of Children and Family Services, Los Angeles or District Attorney, Los Angeles Sheriff Department and or the Los Angeles Police Department.

If yes, please provide date(s) and details: \_\_\_\_\_

3. Have you been convicted of an offense other than a minor traffic violation? \_\_\_\_ YES \_\_\_\_ NO

If yes, please provide date(s) and details: \_\_\_\_\_

**Note:** Answering "yes" to the above question does not constitute an automatic barrier to volunteer. Factors such as date of the offense, seriousness and nature to the violation, and rehabilitation will be taken into account.

### Additional Information

As an ongoing & committed volunteer for VTC, you will be asked to comply with a Code of Confidentiality, and will be asked to undergo Finger Imaging Live Scan upon beginning this volunteer position. Are you comfortable with these requirements? \_\_\_\_ YES \_\_\_\_ NO

If NO, please describe your concerns: \_\_\_\_\_

### Demographics (Optional)

What is your Ethnicity? Circle all that apply:

African American/Black  
Asian/Pacific Islander  
White (non-Hispanic)

Hispanic/Latino  
Native American  
Other:

### Reference

Please provide the name and phone number of one individual who we can contact for a reference

|                           |  |
|---------------------------|--|
| Name                      |  |
| Home, Work, or Cell Phone |  |
| Relationship to you       |  |
|                           |  |



| Person to Notify in Case of Emergency |  |
|---------------------------------------|--|
| Name                                  |  |
| Street Address                        |  |
| City, State, ZIP Code                 |  |
| Phone                                 |  |

| Equal Opportunities Policy and Reasonable Accommodation                                                                                                                                                                                                                                                                                                                                                                                                                                                                                                                                                                                                                                                                                                                                                                                                                                                                                                                                                                                                                 |
|-------------------------------------------------------------------------------------------------------------------------------------------------------------------------------------------------------------------------------------------------------------------------------------------------------------------------------------------------------------------------------------------------------------------------------------------------------------------------------------------------------------------------------------------------------------------------------------------------------------------------------------------------------------------------------------------------------------------------------------------------------------------------------------------------------------------------------------------------------------------------------------------------------------------------------------------------------------------------------------------------------------------------------------------------------------------------|
| <p>Valley Trauma Center provides equal volunteer opportunities without regard to the fact or perception of a person's race, color, creed, religion, national origin, ancestry, age, height, weight, sex, sexual orientation, gender identity, domestic partner status, marital status, physical disability, mental disability, medical condition, Acquired Immune Deficiency or AIDS/ HIV status, immigration status, association with members of such protected classes, or in retaliation for opposition to discrimination against such classes, except where discrimination is <i>legally</i> permitted, such as for bona fide occupational requirements or disqualifications.</p> <p>Valley Trauma Center shall make reasonable accommodation of the known religious creed, protected physical or mental disability or medical condition of a volunteer when it will not impose an undue hardship on VTC or jeopardize the safety of the staff member or others. Volunteers' requests for an accommodation should be made to the Volunteer Program Coordinator.</p> |

| Agreement and Signature                                                                                                                                                                                                                                                                                                                                                                                                                                                                                                                                                                                       |  |
|---------------------------------------------------------------------------------------------------------------------------------------------------------------------------------------------------------------------------------------------------------------------------------------------------------------------------------------------------------------------------------------------------------------------------------------------------------------------------------------------------------------------------------------------------------------------------------------------------------------|--|
| <p>Valley Trauma Center relies on the statements in this application to appropriately place volunteers in positions for the benefit of our clients and staff. Inaccurate or incomplete information may adversely affect the quality of service we are able to deliver with the generous assistance of our volunteers. By signing and submitting this application, you acknowledge that the facts stated are true and correct, and that any false statements, omissions or other misrepresentations may result in your reassignment to another volunteer position or dismissal from the volunteer program.</p> |  |
| Name (printed)                                                                                                                                                                                                                                                                                                                                                                                                                                                                                                                                                                                                |  |
| Signature                                                                                                                                                                                                                                                                                                                                                                                                                                                                                                                                                                                                     |  |
| Date                                                                                                                                                                                                                                                                                                                                                                                                                                                                                                                                                                                                          |  |

Thank you for taking the time to complete this application. **Please attach a copy of your Resume:**

Email: [Catalina@valleytrauma.org](mailto:Catalina@valleytrauma.org)

**Please note that if accepted, there is a mandatory 40 or 60 hour training with \$150 fee due at the time of training.**



# Valley Trauma Center

Healing • Advocacy • Education

California State University

**Northridge**

## ADVOCATE APPLICATION

| Contact Information   |  |
|-----------------------|--|
| Name                  |  |
| Street Address        |  |
| City, State, Zip Code |  |
| Cell or Home Phone    |  |
| Email Address         |  |
| Date of Birth         |  |

| Employment                                                                  |                                                                  |
|-----------------------------------------------------------------------------|------------------------------------------------------------------|
| Are you currently employed?                                                 |                                                                  |
| Company:                                                                    |                                                                  |
| Education                                                                   |                                                                  |
| Community College (Name of School ):                                        |                                                                  |
| Bachelor's Degree (Name of School and Degree Type):                         |                                                                  |
| Master's Degree (Name of School): Circle one- enrolled in / graduated from: |                                                                  |
| Availability                                                                |                                                                  |
| During which days/times are you available to volunteer?                     |                                                                  |
| ___ Monday      Hours:                                                      | ___ Saturday      Hours:                                         |
| ___ Tuesday      Hours:                                                     | ___ Sunday      Hours:                                           |
| ___ Wednesday      Hours:                                                   |                                                                  |
| ___ Thursday      Hours:                                                    | Available for Special Event Volunteering?<br>___ YES      ___ NO |
| ___ Friday      Hours:                                                      |                                                                  |

| Language Skills                                         |                                                          |
|---------------------------------------------------------|----------------------------------------------------------|
| What language(s) do you speak/write?                    |                                                          |
| SPOKEN: ___ Fluent      ___ Proficient      ___ Minimal | WRITTEN: ___ Fluent      ___ Proficient      ___ Minimal |
| 2 <sup>nd</sup> Language:                               |                                                          |
| SPOKEN: ___ Fluent      ___ Proficient      ___ Minimal | WRITTEN: ___ Fluent      ___ Proficient      ___ Minimal |

| Commitment                                                                                                 |
|------------------------------------------------------------------------------------------------------------|
| Can you make a long-term commitment to VTC?<br>___ 9 months (school year)      ___ 1 year      ___ 2 years |

| Preferences in Volunteering                                                         |                                                                    |
|-------------------------------------------------------------------------------------|--------------------------------------------------------------------|
| Please inform us on which location(s) & volunteer duties you are most interested in |                                                                    |
| Location:                                                                           | Duties:                                                            |
| <input type="checkbox"/> Santa Clarita                                              | <input type="checkbox"/> Hotline Advocate                          |
| <input type="checkbox"/> Van Nuys                                                   | <input type="checkbox"/> Filing                                    |
| <input type="checkbox"/> Northridge                                                 | <input type="checkbox"/> Sorting/ updating resource materials      |
|                                                                                     | <input type="checkbox"/> Answering phones                          |
|                                                                                     | <input type="checkbox"/> Phone assistance for information referral |
|                                                                                     | <input type="checkbox"/> Outreach                                  |
|                                                                                     | <input type="checkbox"/> Data Entry                                |

| Advocate Statistics                                                                                                                                                                                                                                                                                                                                                                                                                                                                                                                                                                                                                                                                                                                                                                                                                                                                                                                                                                                                                                                                                                                                                                                                                                                                                                                        |
|--------------------------------------------------------------------------------------------------------------------------------------------------------------------------------------------------------------------------------------------------------------------------------------------------------------------------------------------------------------------------------------------------------------------------------------------------------------------------------------------------------------------------------------------------------------------------------------------------------------------------------------------------------------------------------------------------------------------------------------------------------------------------------------------------------------------------------------------------------------------------------------------------------------------------------------------------------------------------------------------------------------------------------------------------------------------------------------------------------------------------------------------------------------------------------------------------------------------------------------------------------------------------------------------------------------------------------------------|
| <p>1. Are you taking this training and volunteering as part of a specific class/course? If yes, please provide the course/class name?</p> <p>2. Are you taking this training and volunteering as part of (Check all that apply):</p> <p><input type="checkbox"/> Major <input type="checkbox"/> Educational / Professional Goal <input type="checkbox"/> Other:</p> <ul style="list-style-type: none"> <li><input type="radio"/> To pursue a Bachelor's degree</li> <li><input type="radio"/> To pursue an MFT</li> <li><input type="radio"/> To pursue an MSW</li> <li><input type="radio"/> Other:</li> </ul> <p>3. Are you intending to further your education at CSUN?</p> <p><input type="checkbox"/> Yes</p> <p><input type="checkbox"/> No</p> <p>4. How did you hear about us? (Check one)</p> <ul style="list-style-type: none"> <li><input type="radio"/> Flyer Posting at _____</li> <li><input type="radio"/> Website _____</li> <li><input type="radio"/> E-mail from school Professor or Department (which professor or department) _____</li> <li><input type="radio"/> School Course</li> </ul> <p>If you heard about us in a specific course, please list the school, name of the professor as well as course number</p> <p>_____</p> <ul style="list-style-type: none"> <li><input type="radio"/> Other _____</li> </ul> |



### Other Related Questions

1. Do you have or are you a party to any civil or criminal proceedings involving the Department of Children and Family Services, Los Angeles or District Attorney, Los Angeles Sheriff Department and or the Los Angeles Police Department.

If yes, please provide date(s) and details: \_\_\_\_\_

2. Have you been convicted of an offense other than a minor traffic violation? \_\_\_\_ YES \_\_\_\_ NO

If yes, please provide date(s) and details: \_\_\_\_\_

**Note:** Answering "yes" to the above question does not constitute an automatic barrier to volunteer. Factors such as date of the offense, seriousness and nature to the violation, and rehabilitation will be taken into account.

### Additional Information

As an ongoing & committed volunteer for the VTC, you will be asked to comply with a Code of Confidentiality, and will be asked to undergo Finger Imaging Live Scan upon beginning this volunteer position. Are you comfortable with these requirements? \_\_\_\_ YES \_\_\_\_ NO

If NO, please describe your concerns: \_\_\_\_\_

### Demographics (Optional)

What is your Ethnicity? Circle all that apply:

African American/Black  
Asian/Pacific Islander  
White (non-Hispanic)

Hispanic/Latino  
Native American  
Other:

### Professional Reference

Please provide the name and phone number of one individual who we can contact for a reference

|                           |  |
|---------------------------|--|
| Name                      |  |
| Home, Work, or Cell Phone |  |
| Relationship to you       |  |

### Person to Notify in Case of Emergency

|                       |  |
|-----------------------|--|
| Name                  |  |
| Street Address        |  |
| City, State, ZIP Code |  |
| Phone                 |  |

|                     |  |
|---------------------|--|
| Relationship to you |  |
|---------------------|--|

### Equal Opportunities Policy and Reasonable Accommodation

Valley Trauma Center provides equal volunteer opportunities without regard to the fact or perception of a person's race, color, creed, religion, national origin, ancestry, age, height, weight, sex, sexual orientation, gender identity, domestic partner status, marital status, physical disability, mental disability, medical condition, Acquired Immune Deficiency or AIDS/ HIV status, immigration status, association with members of such protected classes, or in retaliation for opposition to discrimination against such classes, except where discrimination is *legally* permitted, such as for bona fide occupational requirements or disqualifications.

Valley Trauma Center shall make reasonable accommodation of the known religious creed, protected physical or mental disability or medical condition of a volunteer when it will not impose an undue hardship on VTC or jeopardize the safety of the staff member or others. Volunteers' requests for an accommodation should be made to the Volunteer Program Coordinator.

### Agreement and Signature

Valley Trauma Center relies on the statements in this application to appropriately place volunteers in positions for the benefit of our clients and staff. Inaccurate or incomplete information may adversely affect the quality of service we are able to deliver with the generous assistance of our volunteers. By signing and submitting this application, you acknowledge that the facts stated are true and correct, and that any false statements, omissions or other misrepresentations may result in your reassignment to another volunteer position or dismissal from the volunteer program.

|                |  |
|----------------|--|
| Name (printed) |  |
| Signature      |  |
| Date           |  |

**Thank you for taking the time to complete this application. Please attach a copy of your Resume:**

Email: [Catalina@valleytrauma.org](mailto:Catalina@valleytrauma.org)

**Please note that if accepted, there is a mandatory 60 hour training with \$150 fee due at the time of training.**