

Master of Arts in Psychology

---

Master of Arts in Clinical Psychology  
with an Emphasis in Marriage and Family Therapy

---

Master of Arts in Clinical Psychology with an  
Emphasis in Marriage and Family Therapy with Latinas/os

---



INSPIRATION

*for change*

PEPPERDINE UNIVERSITY  
Graduate School of Education and Psychology

A professional headshot of Dr. Robert DeMayo, a middle-aged man with graying hair and a goatee, smiling. He is wearing a dark suit, a white shirt, and a patterned tie. The background is a solid dark gray.

## DR. ROBERT DEMAYO

*Associate Dean, Psychology Division*

“Our psychology graduate programs offer academically superior training in a supportive environment. We seek to facilitate intellectual and professional growth, while also encouraging personal development. Our distinguished faculty represent a variety of specializations and offer teaching perspectives that are seasoned by research and clinical experience. Southern California provides unique opportunities for service learning, research, and community involvement, all of which strengthen and enrich our graduate curriculum.

## Master of Arts in Psychology

## Master of Arts in Clinical Psychology with an Emphasis in Marriage and Family Therapy

## Master of Arts in Clinical Psychology with an Emphasis in Marriage and Family Therapy with Latinas/os

---

With a unique combination of social understanding and scientific analysis, the Master of Arts in Psychology programs prepare students for a wide range of professional fields, from research to counseling, from business leadership to entrepreneurship. These prestigious programs focus on:

**Personal Growth.** Psychology is a human science, and our students come to us with a desire to understand and aid the human experience. This process begins with the self; therefore, our programs assist students with their quests for self-understanding.

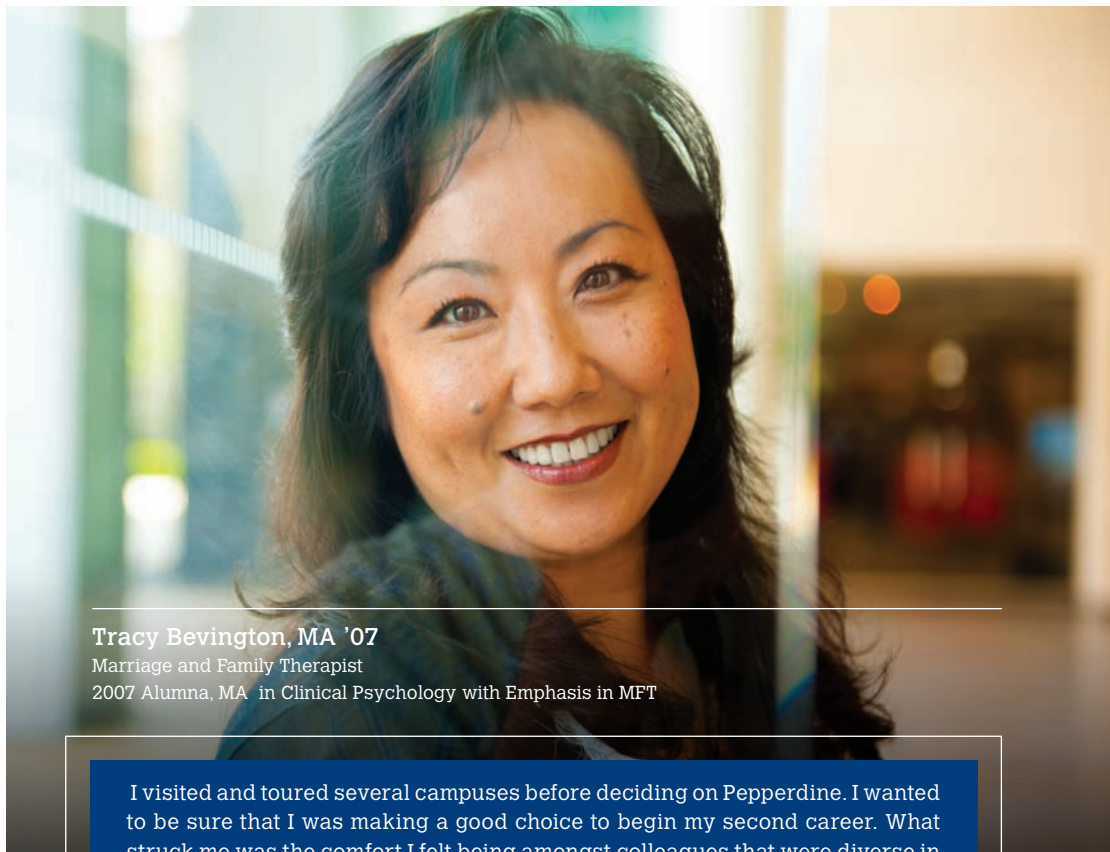
**Professional Development.** Whether you're looking to build your career with a master's degree or use it as a stepping stone to pursue doctoral studies, our faculty mentors, supportive career services department, and extensive alumni network can help you achieve your professional goals.

**Changing Lives.** The Graduate School of Education and Psychology draws upon Pepperdine's values-based heritage and takes a holistic approach to education. The practical skills and clinical experience of this program prepare our students to build communities and inspire change across the nation and throughout the world.

### Pepperdine University at a Glance:

- Prestigious programs
- Nationally recognized faculty
- Supportive environment with small class sizes
- Day and evening formats to suit your academic needs
- Class availability with campuses in Encino, Irvine, Malibu, and West Los Angeles
- Professional development training
- Dedicated career services department
- Strong alumni network

## Profiles of Success



---

### Tracy Bevington, MA '07

Marriage and Family Therapist

2007 Alumna, MA in Clinical Psychology with Emphasis in MFT

I visited and toured several campuses before deciding on Pepperdine. I wanted to be sure that I was making a good choice to begin my second career. What struck me was the comfort I felt being amongst colleagues that were diverse in background, as well as age. The professors have a passion that inspires their students to learn. The atmosphere of collaboration and partnership helped guide me through the process of becoming a licensed marriage and family therapist. The resources available in practicum placement and career services were invaluable. I could not have asked for a better experience.

# Master of Arts in Psychology

## Curriculum

The Master of Arts in Psychology (MAP) program is designed to provide students with a thorough understanding of the principles of psychology. Within a strong clinical framework, the 36-to-48-unit program offers theoretical and practical learning in a supportive environment. Courses in this program provide students with an in-depth understanding of the principles of psychology and prepare them for a host of professional endeavors.

## Doctoral Study Preparation

The MAP program serves as a stepping stone for students interested in pursuing a doctoral degree (PhD or PsyD) in psychology or a related field.

## Course Sampling

- Research and Evaluation Methods for Mental Health Professionals
- Physiological Psychology
- Psychopathology
- Individual, Couple, and Family Development: A Life Cycle Approach
- Behavioral Principles and Theories of Learning
- Interpersonal Skills and Group Therapy
- Theories of Counseling and Psychotherapy
- Assessment of Intelligence
- Personality Assessment
- Techniques of Counseling and Psychotherapy

For a comprehensive course list, please visit us online at:  
[gsep.pepperdine.edu/masters-psychology/courses](http://gsep.pepperdine.edu/masters-psychology/courses)



## Profiles of Success

---

### **Kelley Stevens, MA '13**

Private Practice Therapist and Outreach Coordinator at Engage Treatment Programs  
2013 Alumna, MA in Clinical Psychology with Emphasis in MFT

One of the reasons I chose Pepperdine is that it isn't just about academic excellence; it's about the human element and who we are as students, as professionals, and as people. Some programs forsake one element over the other, but Pepperdine combines them. The program provided the balance I needed as a student, and because of that I was able to launch my career at a young age.

## Career Options

The MAP program also serves as a gateway into the human services field. Job possibilities range in industry settings from public mental health, education, health care, and government, to the corporate sector. Alumni are enjoying careers within organizations such as :

- Cedars-Sinai Medical Center
- City of Hope Hospital
- Clearview Treatment Programs
- Institute for Applied Behavior Analysis
- L.A. County Department of Children and Family Services
- Manhattan Beach Unified School District
- Orange County Department of Education
- Orange County Healthcare Agency
- Orange County Public Defender's Office
- The Walt Disney Company
- University of California at Irvine
- U.S. Department of Veterans Affairs
- U.S. Navy

Some of the positions alumni hold within these organizations include:

### **Clinical/Research Psychology:**

- Care coordinator
- Group facilitator
- Behavior therapist
- Child development specialist
- Research assistant

### **Multi-industry:**

- Case manager at agencies such as the Department of Children and Family Services, Foster Care, and the Department of Public Social Services
- Corrections officer
- Activist/Advocate
- Grant writer
- Human resources
- Corporate recruiter
- Market research analyst
- Academic advisor
- Career counselor
- Executive coach

## Master of Arts in Clinical Psychology with an Emphasis in Marriage and Family Therapy

The Master of Arts in Clinical Psychology with an Emphasis in Marriage and Family Therapy program is a minimum 60-unit program, which offers an academic and practical foundation that prepares students to serve individuals, couples, families, and groups as licensed psychotherapists. Faculty scholar-practitioners provide high-quality training in a supportive learning environment.

The program is designed to prepare students to work in community counseling, governmental entities, or educational settings, or to launch their own private practices. The clinical training and academic preparation also equip students for doctoral programs in clinical psychology, counseling psychology, or family therapy. This program features:

- The choice between a full-time Day Format or an Evening Format for working professionals
- A clinical and practice-based course of study that emphasizes current applied methods of psychotherapy
- Assistance in field placements for supervised clinical experience/practicum
- Students may choose specialization in serving Latinas/os (see page 10)

### Licensure

In accordance with the Board of Behavioral Sciences (BBS), Pepperdine offers course work that prepares students for licensure in both Licensed Marriage and Family Therapy (LMFT) and Licensed Professional Clinical Counseling (LPCC). As part of the program, students gain supervised counseling experience in clinical settings.



## Licensed Marriage and Family Therapists

LMFTs are employed in both the public and private sector in a wide range of positions. They work in county mental health agencies, hospitals, educational institutions, employee assistance programs, and private practice. LMFTs primarily conduct psychotherapy with individuals (adults and children), couples, and families, and utilize a relational perspective in their work. They also work as clinical supervisors, administrators, and educators. LMFT is a nationally-recognized state license.

## Licensed Professional Clinical Counselors

LPCCs employ counseling interventions and psychotherapeutic techniques to improve mental health and empower individuals to deal adequately with life situations, reduce stress, experience growth, and change behavior. LPCCs work with individuals and with groups, and with specialized educational and clinical training experiences; they can also work with couples and families. Our programs provide this specialization in couples and family counseling. LPCCs may also do specialized work in areas such as career counseling, rehabilitation therapy, and art and dance therapy with further post-graduation training. LPCC is a state license.

## Course Sampling

- Diagnosis and Treatment of Mental Health Disorders
- Multicultural Counseling
- Individual and Family Treatment of Substance Abuse
- Couple and Family Therapy I
- Clinical Practicum
- Trauma in Diverse Populations
- Career Development Theories and Techniques

Pepperdine's LMFT and LPCC preparation courses emphasize recovery-oriented care and provide opportunities within the classroom where students can meet with mental health consumers. The course curricula also provide contextual framework necessary for working with and understanding diverse cultures and populations. Additionally, program preparation includes familiarity with the social and psychological implications of socioeconomic position, as well as an understanding of the ways in which poverty and social stress impact the individual's mental health and recovery.

## Program Formats

### Day Format

Designed for full-time students, the program's Day Format opens for enrollment each fall and is offered at Pepperdine's Drescher Graduate Campus in Malibu. The format allows students to be part of a selective cohort-based program that is completed in two academic years.

### Evening Format

Designed for working professionals, the Evening Format offers classes weeknights at the Encino, Irvine, and West Los Angeles Graduate Campuses. This program format admits new students three times a year, allowing for the creation of a flexible schedule, whether part-time or full-time.

### Latina/o Specialization

This specialization, which prepares students to serve Latina/o communities, is offered at the Irvine Graduate Campus. Students are admitted during the fall term and participate as a cohort for 26 units of Latina/o-specific content and experiential Spanish-language development courses, in addition to existing MFT course requirements. Latina/o-specific courses take place at the Irvine Graduate Campus; all other MFT courses are available at the Encino and West Los Angeles Graduate Campuses as well.



## DR. STEPHANIE WOO

*Program Director, Master of Arts in Clinical Psychology with an Emphasis in Marriage and Family Therapy – Day Format*

“The Day Format uniquely offers students the ability to study with a cohort of diverse MFT trainees. Through a shared learning experience, this model provides close peer interaction and support that is particularly valuable as students immerse themselves in clinical and practice based study, and during practicum completion. Over the two year program completion, students receive faculty mentoring and build personal and professional relationships that last a lifetime.

## Master of Arts in Clinical Psychology with an Emphasis in Marriage and Family Therapy with Latinas/os

The Master of Arts in Clinical Psychology with an Emphasis in Marriage and Family Therapy with Latinas/os prepares students to integrate a community-based, systemic perspective in their conceptualization and therapeutic approaches when working with underserved Latina/o communities. The program is administered through Aliento, The Center for Latina/o Communities, at the Irvine Graduate Campus. It offers:

- 26 units of Latina/o-specific LMFT courses
- Experiential Spanish-language development courses for beginning, as well as advanced students
- Language immersion experience in a Spanish-speaking country
- Fulfills the academic eligibility requirements for LMFT or LPCC licensure
- Latina/o-specific courses offered at the Irvine Graduate Campus
- Student cohort accepted every fall

**For more information about Aliento, please contact:**

**Dr. Miguel Gallardo:** [miguel.gallardo@pepperdine.edu](mailto:miguel.gallardo@pepperdine.edu)



## DR. MIGUEL GALLARDO

*Program Director, Aliento, The Center for Latina/o Communities*

“The Latino community is the fastest growing and largest ethnoculturally diverse group in the United States. As such, Pepperdine University has created Aliento to give voice to the strengths and values of the Latino community. We believe that empowerment of individuals begins with the inclusion of community members in the development of education, training, and research philosophies. In addition to the emphasis on Latino training and research within Pepperdine’s Clinical Psychology program, Aliento is committed to outreach and education programs in the wider community.

## Program Benefits

### Professional Development

Whether students are looking to continue their studies in a doctoral program, or to obtain LMFT or LPCC licensure to launch their careers, Pepperdine's Master of Arts in Clinical Psychology program will provide the preparation needed. For the last 15 years, Pepperdine graduates consistently score higher than the state average on the LMFT written licensing exam.

### Network Opportunities

As members of Pepperdine's diverse student body, students have access to the University's career services department, which specializes in the field of psychology to support professional advancement. After graduation, students will join GSEP's extensive alumni community network, which includes over 20,000 professionals.

### Award-Winning Faculty

Pepperdine's nationally-recognized faculty members provide real-world experiences that link classroom learning to field of practice. These scholar-practitioners provide mentorship and are dedicated to students' academic and professional success.



## Flexibility and Accessibility

With graduate campuses located across Southern California, and flexible class schedules, Pepperdine's program and format options allow students to choose the right path for their educational needs, whether as a working professional or as a full-time student.

## Course Availability and Support

As a private, student-centered university, Pepperdine is able to offer the courses students need so they can graduate on time. Additionally, small class sizes provide a supportive learning environment with close interaction between faculty and peers.

## Financial Aid

Scholarships, grants, loans, graduate student assistantships, and payment plans are available for qualified students. More than 80 percent of students qualify for federal loans and more than 40 percent are eligible for Pepperdine-funded assistance.

Current information and all forms necessary to apply for financial aid are available online: [gsep.pepperdine.edu/financialaid](https://gsep.pepperdine.edu/financialaid)

## Profiles of Success



### **Rebecca Cooper, MA '97**

Founder, Rebecca's House, Eating Disorder  
Outpatient Programs and Eating Disorder  
Traditional Living Residence  
1997 Alumna, MA in Clinical Psychology  
with Emphasis in MFT

When I decided to attend graduate school, I knew my goals included learning about best practices in therapy and best interventions to work specifically with people suffering from eating disorders. Pepperdine provided me with the education and foundation I needed to understand the complexities of emotional barriers and disconnectedness. My professors encouraged my passion to create a recovery model for the treatment of eating disorders. They helped me further develop my vision and beliefs for recovery, which include spiritual, emotional, and physical components.

## Admission Requirements

- Application for admission with a nonrefundable processing fee
- A bachelor's degree from a regionally-accredited institution. The Day Format requires a bachelor's degree in psychology or a closely related field.
- Official transcript in a sealed envelope from the accredited institution that awarded the baccalaureate degree to the applicant, as well as transcripts from all other colleges or universities attended to earn the degree
- GRE (or MAT for the evening program) scores (test must have been taken within the last five years)
- Two professional recommendations attesting to the applicant's competencies, character, and potential and/or ability as a mental health professional
- A two-to-five-page typed autobiographical description of previous training and experience, current interests, future professional goals, and reasons for applying to the program

For complete program-specific admission requirements or to request an application, apply online, or download materials, please visit: [gsep.pepperdine.edu/admission](http://gsep.pepperdine.edu/admission)

## GSEP Campuses

The Pepperdine University Graduate School of Education and Psychology has accessible graduate campuses throughout Southern California that offer students both convenient locations and the ability to start a master's degree program year-round.

		WEST L.A.	IRVINE	ENCINO	MALIBU
Evening Programs	MA in Psychology	Fall Spring Summer	Fall Spring Summer	Fall Spring Summer	
	MA in Clinical Psychology/MFT – Evening	Fall Spring Summer	Fall Spring Summer	Fall Spring Summer	
	MA in Clinical Psychology/MFT with Latinas/os – Evening		Fall		
Day Program	MA in Clinical Psychology/MFT – Day				Fall

## More Information

To learn more about the master's programs at GSEP, including the application process and deadlines, please contact us:

**Master of Arts in Psychology (MAP): Evening Format**  
**310.568.5605 • [psychology-masters@pepperdine.edu](mailto:psychology-masters@pepperdine.edu)**  
[gsep.pepperdine.edu/masters-psychology](http://gsep.pepperdine.edu/masters-psychology)

**Master of Arts in Clinical Psychology (MACLP): Day Format**  
**310.506.4608 • [psychology-masters@pepperdine.edu](mailto:psychology-masters@pepperdine.edu)**  
[gsep.pepperdine.edu/masters-clinical-psychology-mft-day](http://gsep.pepperdine.edu/masters-clinical-psychology-mft-day)

**Master of Arts in Clinical Psychology (MACLP): Evening Format**  
**310.568.5605 • [psychology-masters@pepperdine.edu](mailto:psychology-masters@pepperdine.edu)**  
[gsep.pepperdine.edu/masters-clinical-psychology-mft-evening](http://gsep.pepperdine.edu/masters-clinical-psychology-mft-evening)

**Aliento (Latina/o Specialization)**  
**310.568.5605 • [psychology-masters@pepperdine.edu](mailto:psychology-masters@pepperdine.edu)**  
[aliento.pepperdine.edu](http://aliento.pepperdine.edu)

## GSEP Mission

The Graduate School of Education and Psychology of Pepperdine University is an innovative learning community where faculty, staff, and students of diverse cultures, perspectives, and faiths work collaboratively to foster academic excellence, social purpose, meaningful service, and personal fulfillment.

As a graduate school within a Christian university, GSEP endeavors to educate and motivate students to assume leadership roles in professions that improve and enrich the lives of individuals, families, and communities. To this end, GSEP is dedicated to exemplifying and providing inspiration for change.

Pepperdine University is accredited through the Western Association of Schools and Colleges (WASC).



[gsep.pepperdine.edu](http://gsep.pepperdine.edu)

Encino • Irvine • Malibu • West Los Angeles

